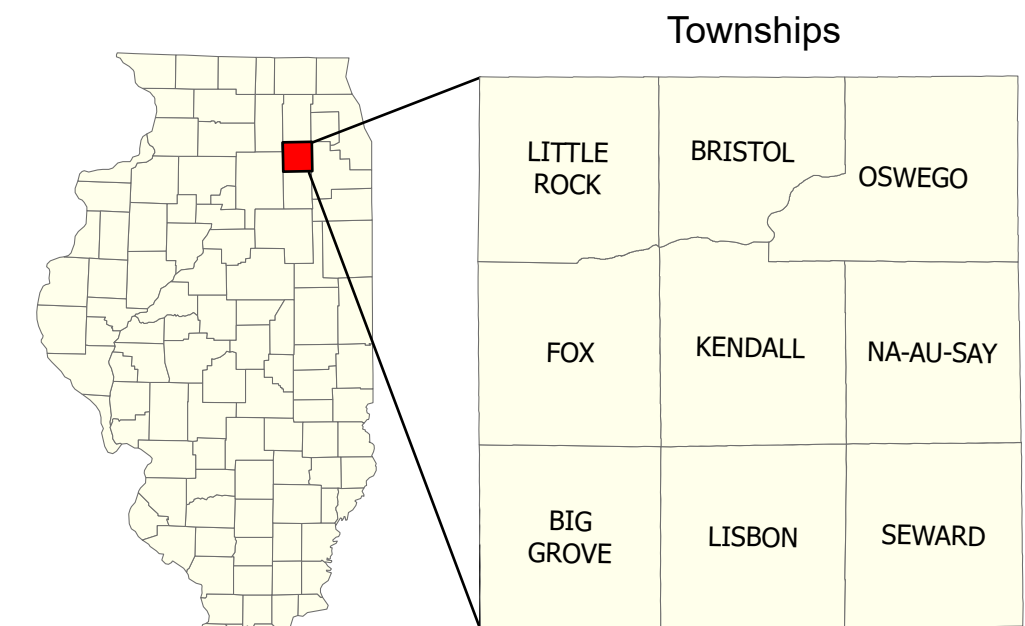


# HIGHWAY MAP KENDALL COUNTY - 2021 -

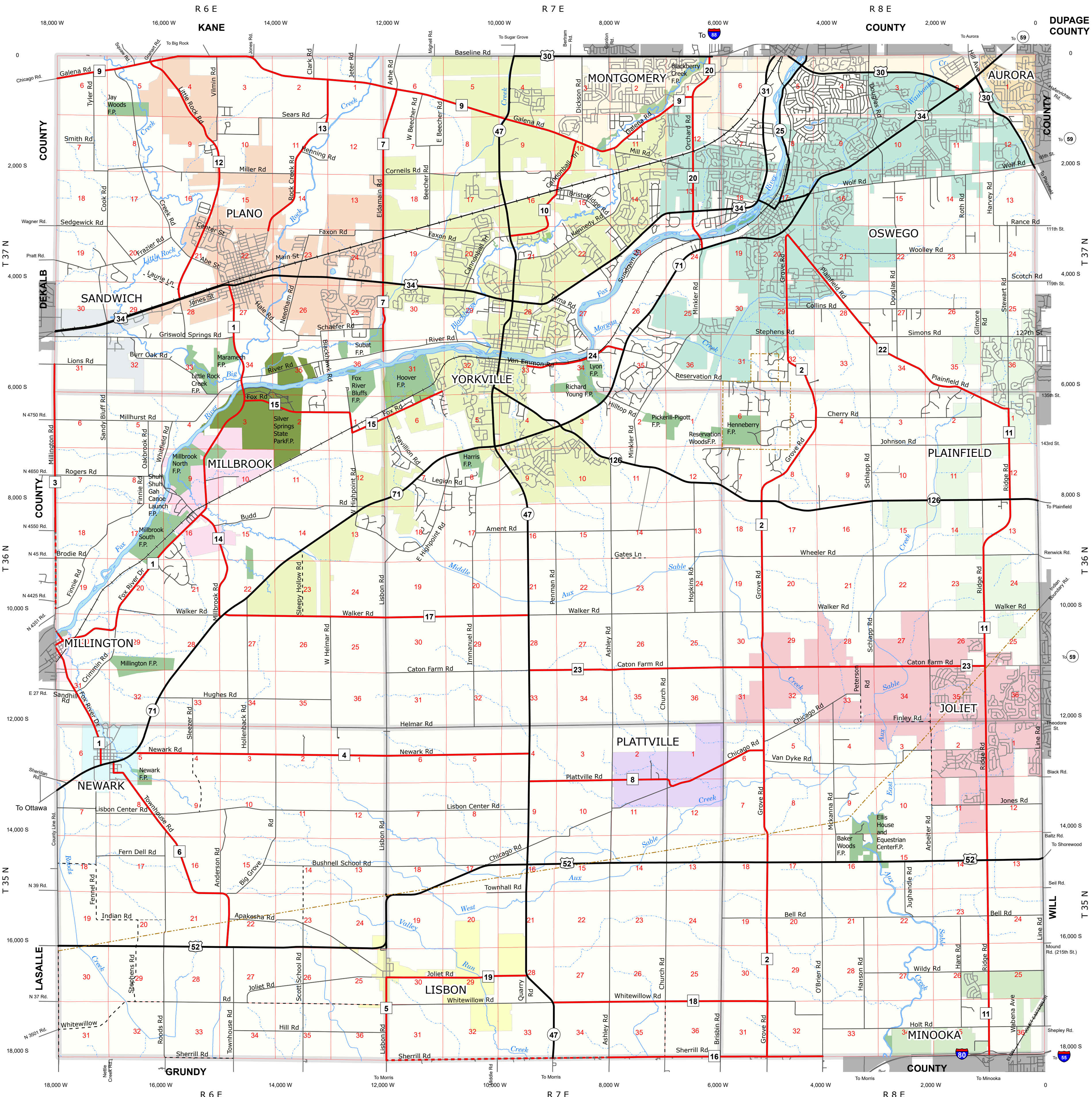
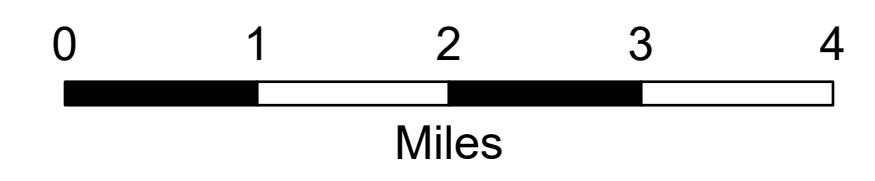
<http://www.co.kendall.il.us>



Townships

LITTLE ROCK	BRISTOL	OSWEGO
FOX	KENDALL	NA-AU-SAY
BIG GROVE	LISBON	SEWARD

1 inch = 1 mile



- Adjacent County
- County
- Interstate
- State & Federal
- Bituminous
- Gravel
- Dirt
- Local
- PLSS Sections
- Political Townships
- State Park
- County Forest Preserve
- Aurora
- Joliet
- Lisbon
- Millbrook
- Minooka
- Montgomery
- Newark
- Oswego
- Plainfield
- Plano
- Plattville
- Sandwich
- Yorkville

Published by:  
Kendall County Highway Department

Francis C. Klaas, P.E.  
County Engineer

Department Headquarters  
6780 Route 47  
Yorkville, IL 60560  
Phone (630) 553-7616  
FAX (630) 553-9583



**Kendall County GIS**  
111 West Fox Street - Room 308  
Yorkville, Illinois 60560  
630.553.4212

NOTE: The Rural Roads Identification System employs a numbering system based on a grid-mile coordinate system. The mileage is measured from the northeast corner of County. Each grid section west and south of that corner receives a 1000 number added consecutively across the County. Intermediate intersections would be proportionate parts of 1000.