

KENDALL EXTENSION STUDY

Breakout Room # 3

Stations:

Montgomery & Oswego

Design Analysis

Minimum features of each station

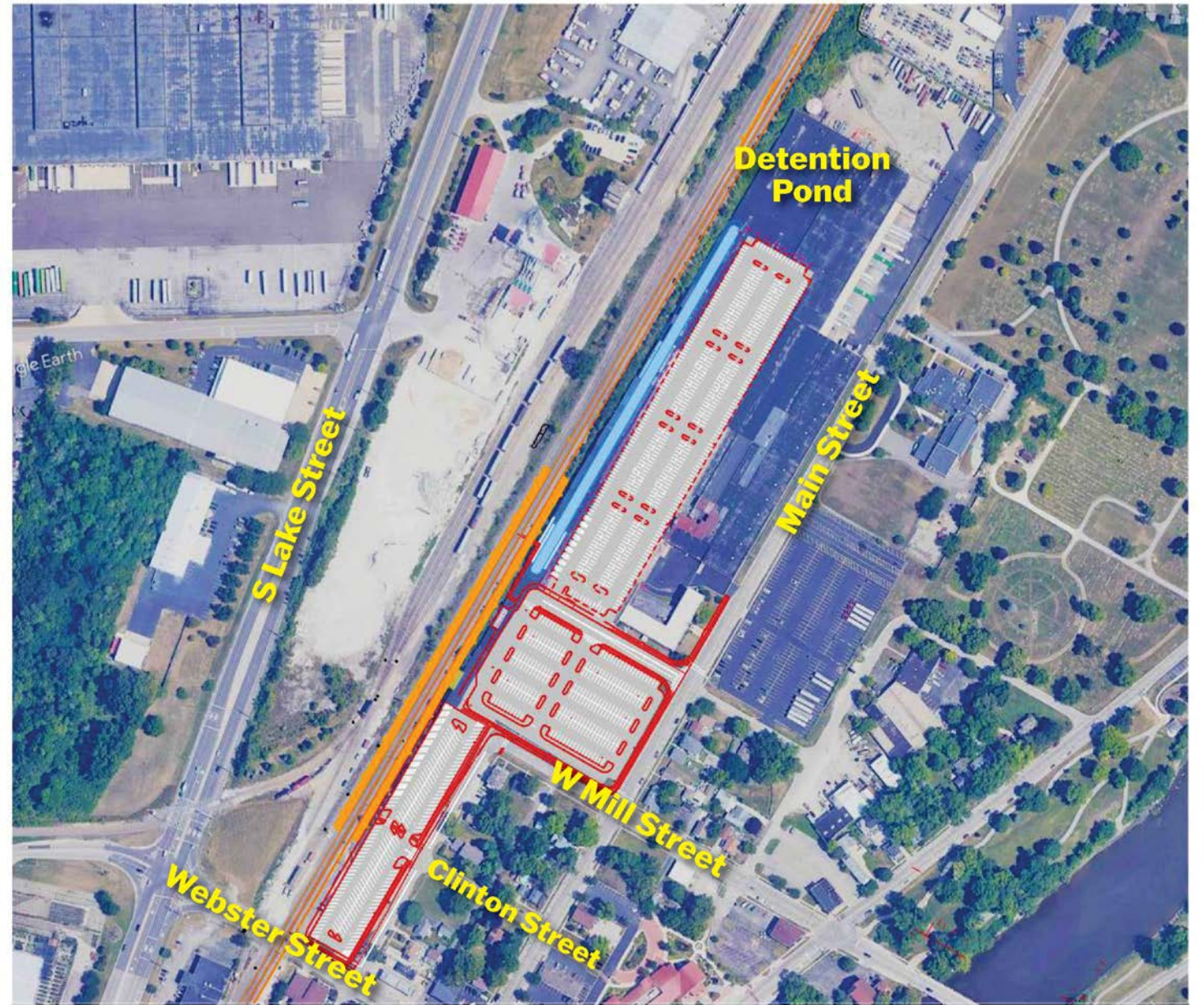
- Inbound and outbound boarding platform(s)
- A warming house
- Parking facilities
- Pedestrian and vehicular access to public roads

Station architecture and site design

- Based on Metra design criteria and community input
- Station and parking lot sizes based on ridership projections
- Concept-level design includes station features as well as earthwork, landscaping, lighting, utilities and access roads

Montgomery Location

- Key Findings
 - 3.0 Miles from ATC
 - 599 Parking Spaces – Phase 1
 - 1,165 Parking Spaces – Phase 2
 - Access via Main St and Clinton St
 - Pedestrian tunnel required
 - Existing buildings impacted (1 building impacted by parking lot) – potential visual historic impact
 - No road closures required
 - No major environmental resources identified (pending soils testing)



Montgomery Station

- **Design Elements**

- Stair entry and gabled waiting room provide architectural focus
- Traditional materials and construction with brick masonry walls
- Warming shelters on both platforms
- Public restrooms at platform level
- Vendor space at parking lot level
- Bench seating, bike parking and parking pay boxes located under cover of roof
- Ramps, stairs and pedestrian tunnel connect platforms and provide access from parking lot and drop-off





Oswego Location

- Key findings
 - 6.1 Miles from ATC, 3.1 miles from Montgomery
 - 450 Parking Spaces – Phase 1
 - 1,200 Parking Spaces – Phase 2
 - Access to South Lot via Mill Road & North Lot via Tuscany Trail and Orchard Road
 - Easement with ComEd required for access to north lot
 - Pedestrian tunnel required
 - Entire site on Village-owned property
 - No road closures required
 - No major environmental resources identified



Oswego Station

- **Design Elements**

- Dramatic roof design with warm-colored wood cladding
- Public restrooms and utility rooms clad with glazed brick
- Warming shelters provided on both platforms
- Pedestrian tunnel connects platforms and provides access from north and south parking lots
- Bench seating, bike racks and parking pay boxes located under cover of roof





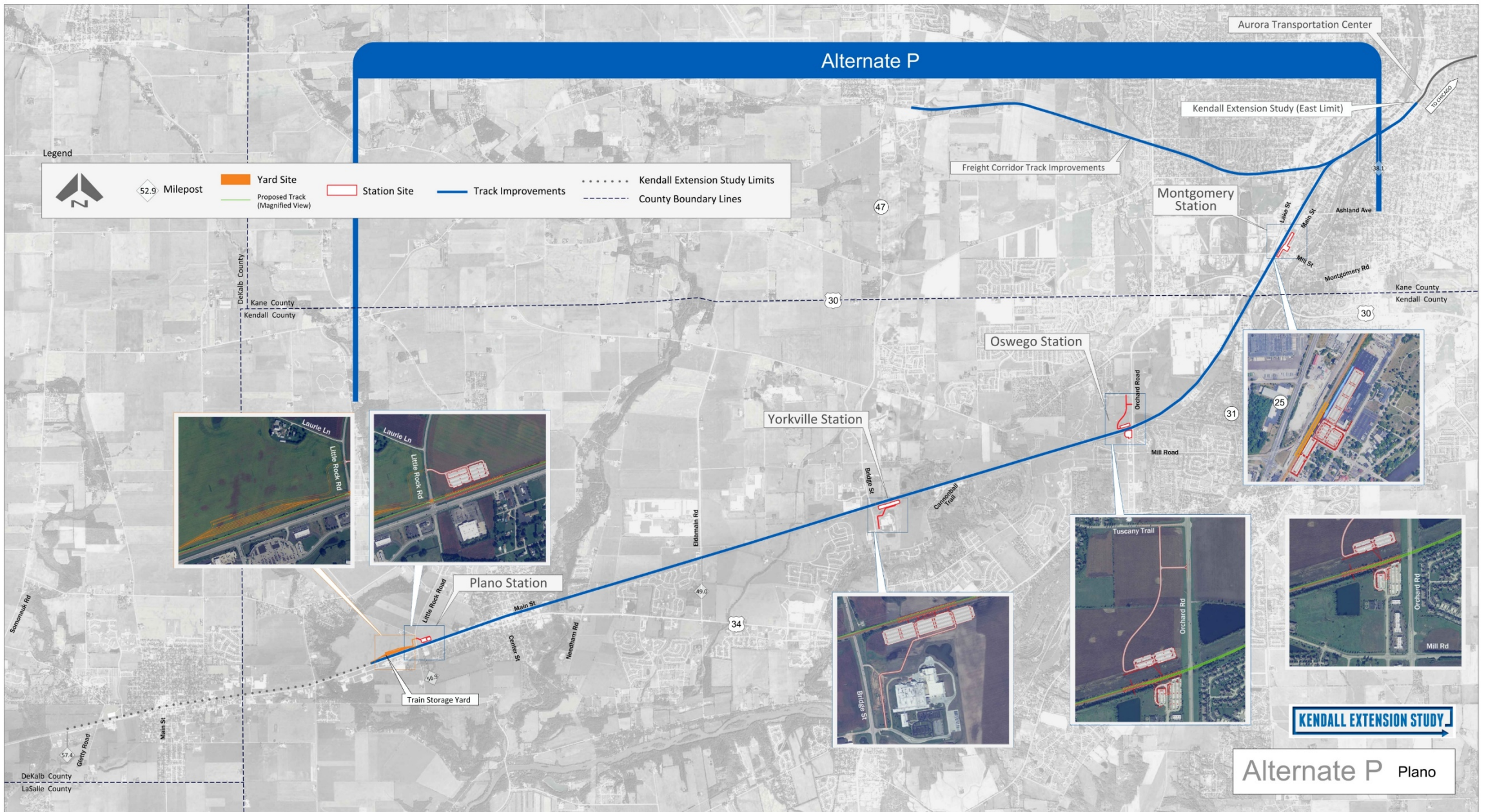
Questions?

Website:

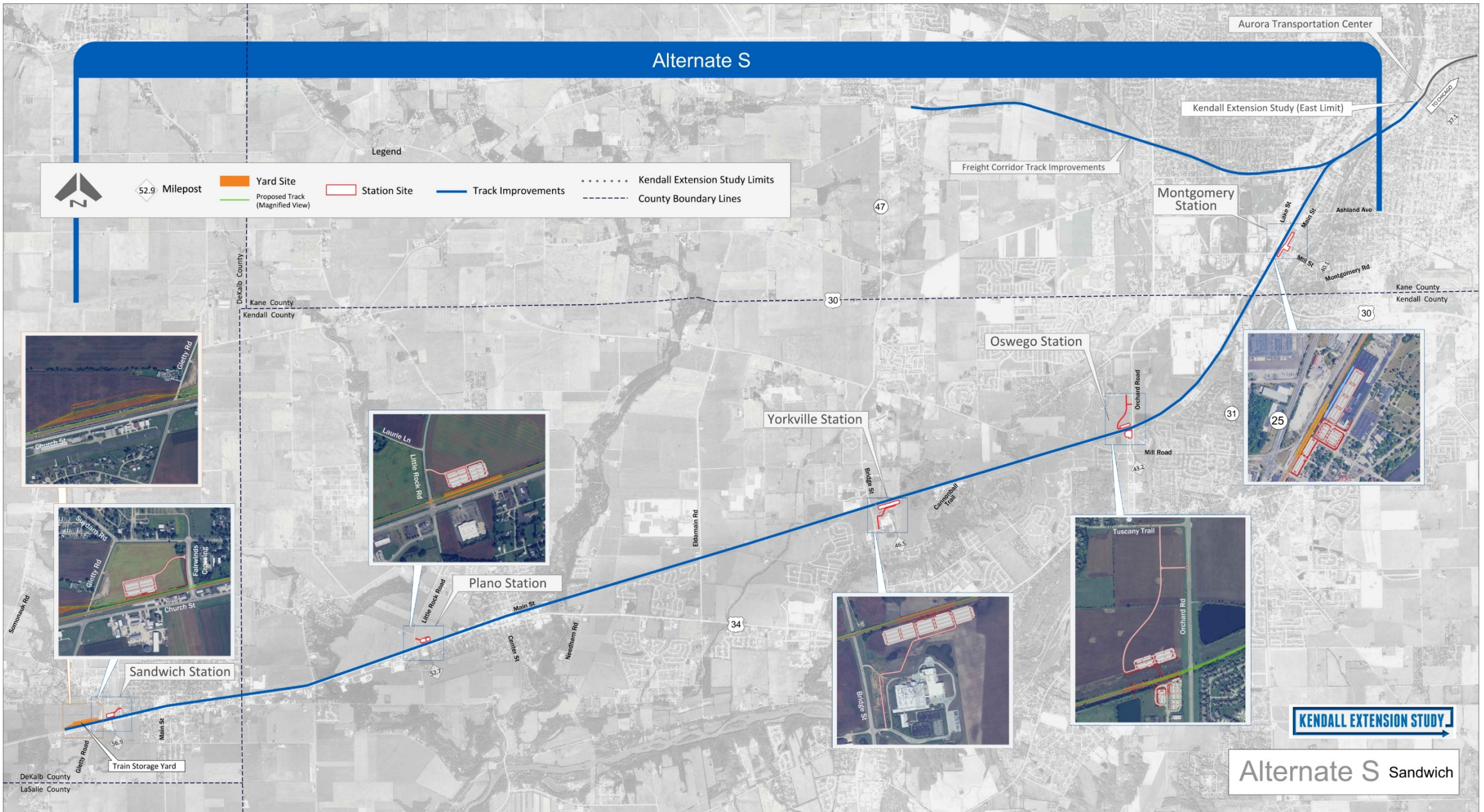
[Metrarail.com/kendallextension](https://metrarail.com/kendallextension)







Alternate S



Alternate S Sandwich