

# **KENDALL EXTENSION STUDY**



**Breakout Room # 4**

**Stations:**

**Yorkville, Plano & Sandwich**

# Design Analysis

---

## Minimum features of each station

- Inbound and outbound boarding platform(s)
- A warming house
- Parking facilities
- Pedestrian and vehicular access to public roads

## Station architecture and site design

- Based on Metra design criteria and community input
- Station and parking lot sizes based on ridership projections
- Concept-level design includes station features as well as earthwork, landscaping, lighting, utilities and access roads

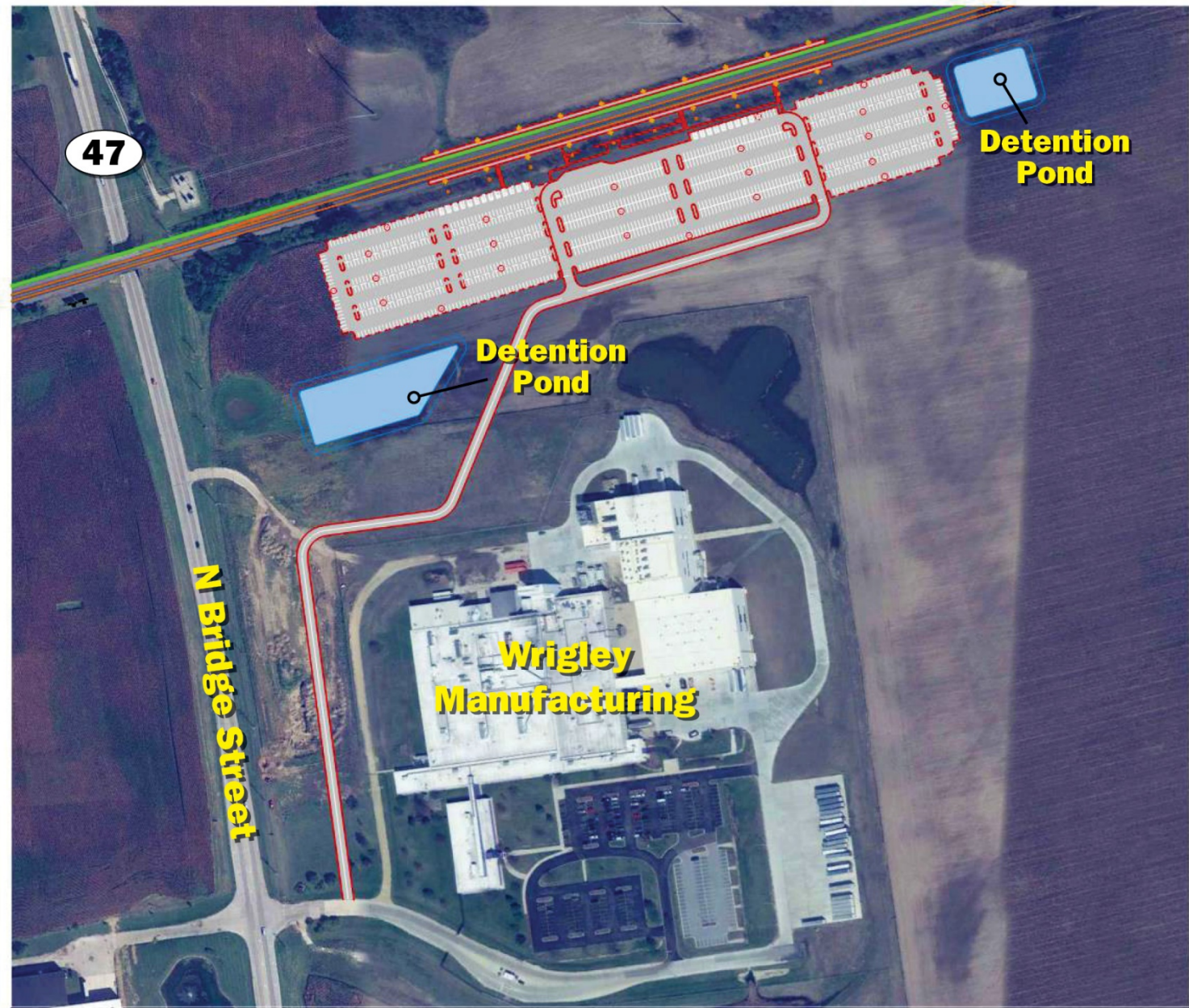
## Track and yard design

- Based on Metra, AREMA, BNSF, IDOT and ICC design criteria
- Concept-level design includes additional mainline track, additional freight track, yard improvements and all associated earthwork, right-of-way, structures, signals and road crossing improvements

# Yorkville Location

## • Key findings

- 9.4 Miles from ATC, 3.3 miles from Oswego
- 451 Parking Spaces – Phase 1
- 1,150 Parking Spaces – Phase 2
- Access via Wrigley Dr./Bridge Street
- Pedestrian tunnel required
- One property impacted; no buildings impacted
- No road closures required
- No major environmental resources identified
- Similar impacts, design and costs if site is moved to alternate location east of Eldmain Road
- Outlying yard is required if this is a terminal station



# Yorkville Station

---

- **Design Elements**

- Contextual materials
- Design references traditional rail station design with contemporary detailing
- Warming shelters provided on both platforms
- Benches, bike racks, and parking pay boxes located under cover of roof
- Pedestrian tunnel connects platforms in run-through station scenario

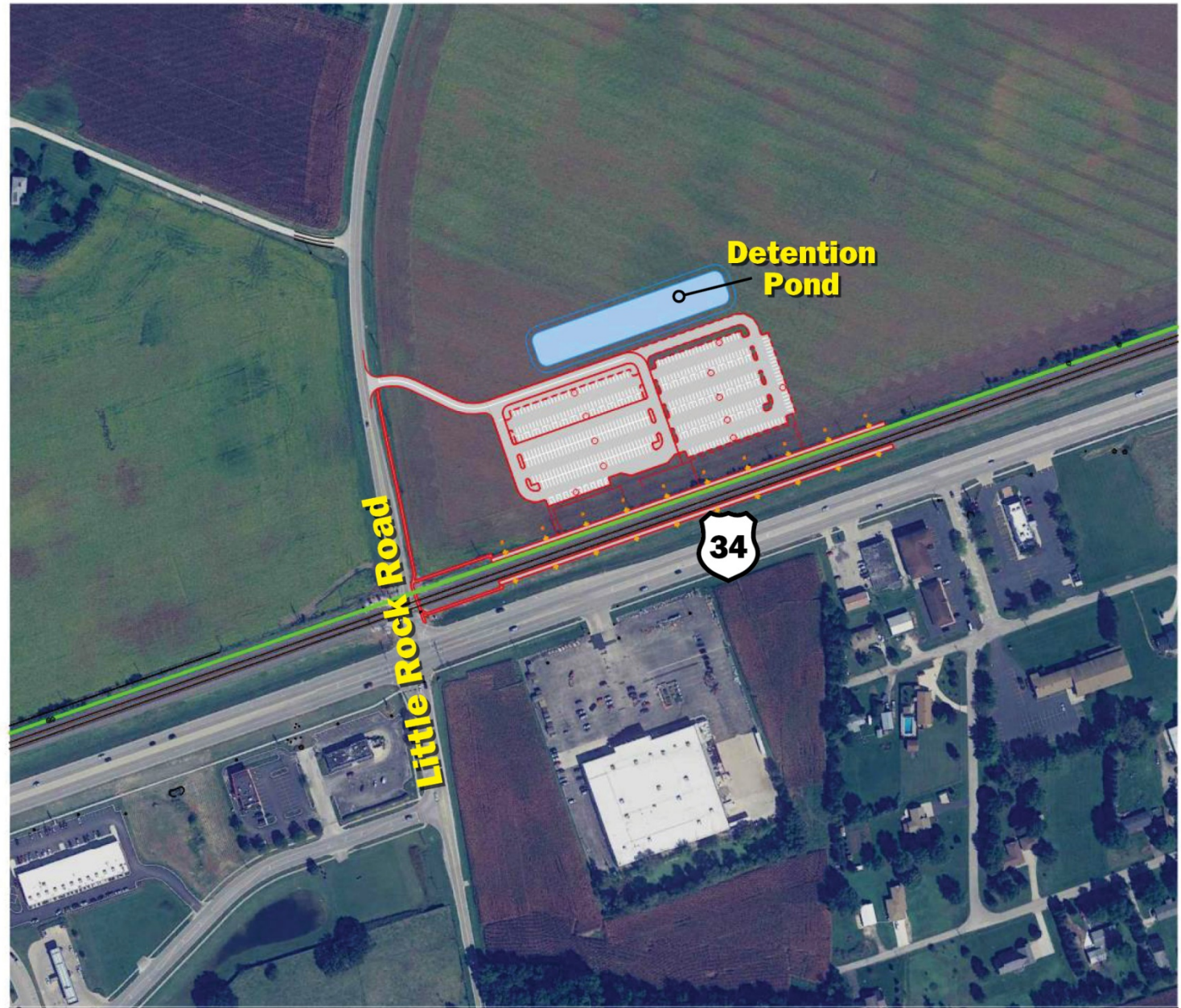




# Plano Location

- **Key findings**

- 15.6 Miles from ATC, 6.2 miles from Yorkville
- 153 Parking Spaces – Phase 1
- 500 Parking Spaces – Phase 2
- Access via Little Rock Road
- One property impacted; no buildings impacted
- No road closures required
- No major environmental resources identified
- Outlying yard is required if this is a terminal station



# Plano Station

---

- **Design Elements**

- Clean look with modern color and material palette
- Warming shelters provided on both platforms
- Mechanical / utility room block covered with dark brick cladding
- Benches, bike racks, and parking pay boxes located under cover of roof
- Pedestrian tunnel connects platforms in run-through station scenario



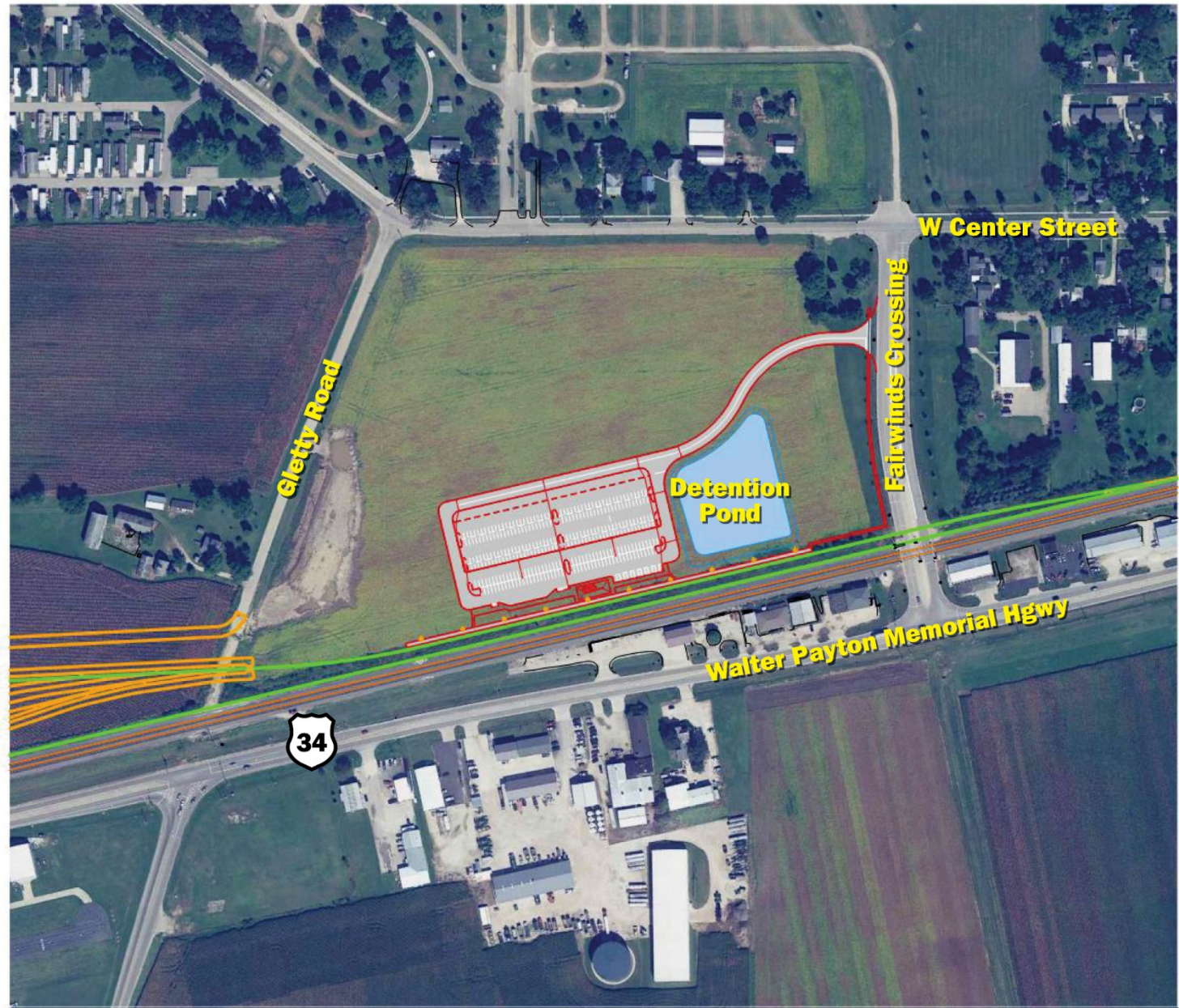




# Sandwich Location

## • Key findings

- 19.8 Miles from ATC, 4.2 miles from Plano
- 125 Parking Spaces – Phase 1
- 325 Parking Spaces – Phase 2
- Access via Fairwinds Crossing
- Pedestrian tunnel not required
- One property impacted; no buildings impacted
- No road closures required
- No major environmental resources identified – potential impacts to historic properties
- Outlying yard is required if service extends to Sandwich



# Sandwich Station

- **Design Elements**

- Clean modern look with warm color and material palette
- Warming shelter enclosed with clear glass
- Mechanical / utility room block covered with natural limestone cladding
- Benches, bike racks, and parking pay boxes located under cover of roof





# Terminal Yard Design

- A single storage yard must be constructed near the selected terminal location station
- Includes crew facility building for engineers, conductors and train cleaning crews to report to work
- Includes an emergency fuel facility
- Accommodates future expansion to 8-track storage yard
- Access via existing local road network
- Will not impact any existing buildings



# Questions?

## Website:

[Metrarail.com/kendallextension](http://Metrarail.com/kendallextension)

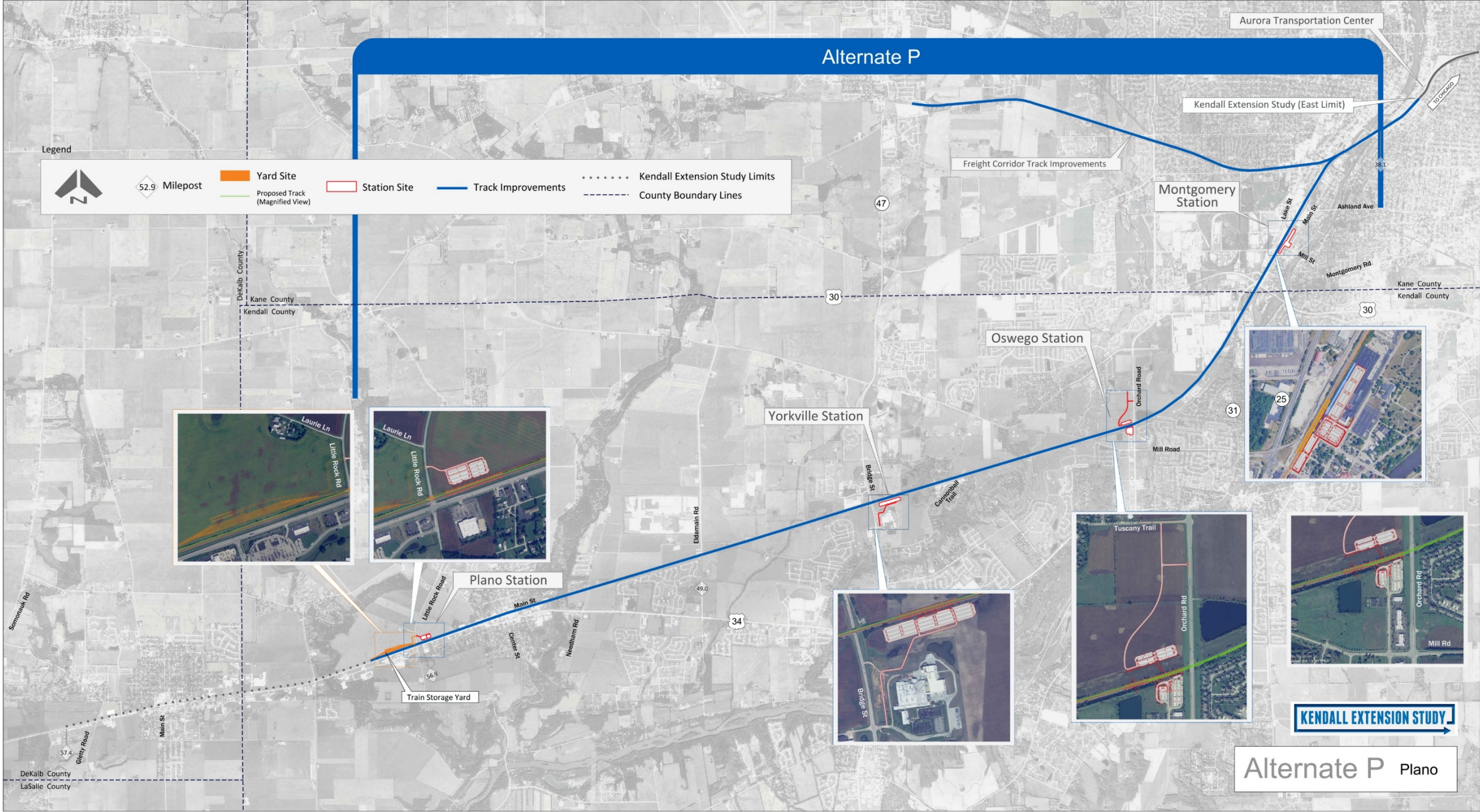




# Alternate P

Legend

- Milepost (52.9)
- Yard Site (Orange rectangle)
- Proposed Track (Magnified View) (Green line)
- Station Site (Red outline)
- Track Improvements (Blue line)
- Kendall Extension Study Limits (Dotted line)
- County Boundary Lines (Dashed line)



Alternate P Plano

# Alternate S

Aurora Transportation Center

Kendall Extension Study (East Limit)

Freight Corridor Track Improvements

Montgomery Station

Oswego Station

Yorkville Station

Plano Station

Sandwich Station

Train Storage Yard

**Legend**

- North
- 52.9 Milepost
- Yard Site
- Station Site
- Track Improvements
- Kendall Extension Study Limits
- County Boundary Lines
- Proposed Track (Magnified View)



**KENDALL EXTENSION STUDY**

Alternate S Sandwich