

F.A.U. RTE.	SECTION	COUNTY	TOTAL SHEETS	SHEET NO.
	22-00000-02-GM	KENDALL	8	1
		ILLINOIS	CONTRACT NO.	

INDEX OF SHEETS

- 1 COVER SHEET
- 2 ALIGNMENTS AND BENCHMARKS
- 3 GENERAL NOTES AND SCHEDULE OF QUANTITIES
- 4-8 TREE REMOVAL PLANS

LIST OF HIGHWAY STANDARDS

- 000001-06 STANDARD SYMBOLS, ABBREVIATIONS AND PATTERNS
- 701001-02 OFF-ROAD OPERATIONS, 2L, 2W, MORE THAN 15' (4.5 M) AWAY
- 701006-05 OFF-ROAD OPERATIONS, 2L, 2W, 15' (4.5 M) TO 24" (600 MM) FROM PAVEMENT EDGE
- 701301-04 LANE CLOSURE, 2L, 2W, SHORT TERM OPERATIONS
- 701601-09 URBAN LANE CLOSURE, MULTILANE, 1W OR 2W WITH NONTRAVERSABLE MEDIAN
- 701901-08 TRAFFIC CONTROL DEVICES

TRAFFIC DATA

DESIGN DESIGNATIONS:

- COLLINS ROAD = URBAN COLLECTOR**
- MINKLER ROAD = MAJOR COLLECTOR**
- GROVE ROAD = MINOR ARTERIAL**

ADT:

- COLLINS ROAD = 750 (2019) – 11,000 (2040)**
- MINKLER ROAD = 3,850 (2019) – 13,000 (2040)**
- GROVE ROAD = 3,600 (2019) – 9,000 (2040)**

DESIGN SPEED:

- COLLINS ROAD = 45 MPH**
- MINKLER ROAD = 45 MPH**
- GROVE ROAD = 45 MPH**

POSTED SPEED:

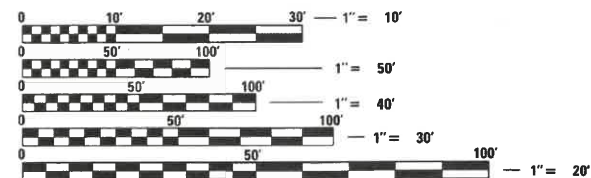
- COLLINS ROAD = 45 MPH**
- MINKLER ROAD = 45 MPH**
- GROVE ROAD = 45 MPH**

SUMMARY OF QUANTITIES

IDOT CODE	PAY ITEM	UNIT	QUANTITY
20100110	TREE REMOVAL (6 TO 15 UNITS DIAMETER)	UNIT	1,524
20100210	TREE REMOVAL (OVER 15 UNITS DIAMETER)	UNIT	509
20100500	TREE REMOVAL, ACRES	ACRE	3.77
70102625	TRAFFIC CONTROL AND PROTECTION, STANDARD 701606	L SUM	1

CONTRACT NO.

J.U.L.I.E.
JOINT UTILITY LOCATING INFORMATION FOR EXCAVATION
1-800-892-0123 OR 811



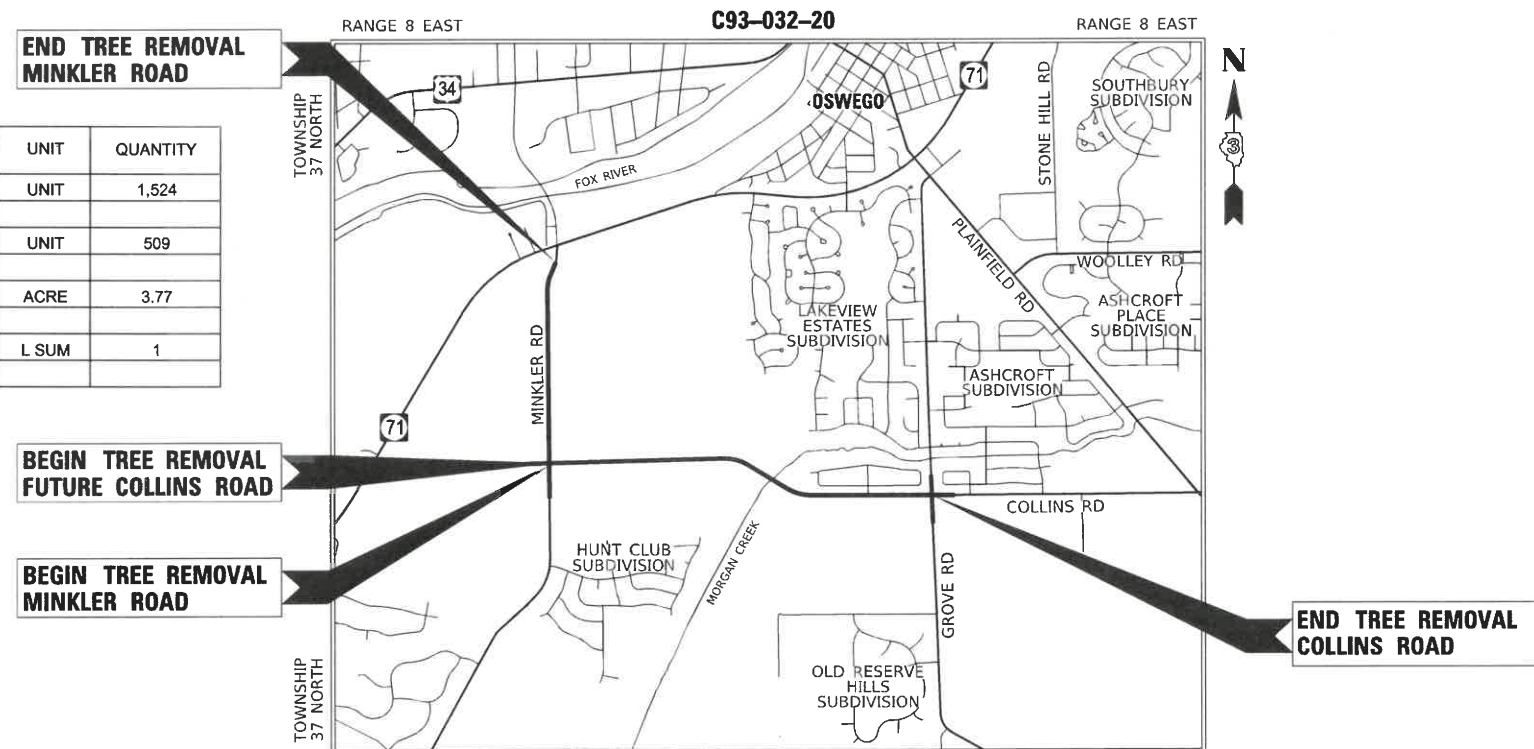
FULL SIZE PLANS HAVE BEEN PREPARED USING STANDARD ENGINEERING SCALES. REDUCED SIZED PLANS WILL NOT CONFORM TO STANDARD SCALES. IN MAKING MEASUREMENTS ON REDUCED PLANS, THE ABOVE SCALES MAY BE USED.

**KENDALL COUNTY
HIGHWAY DEPARTMENT**

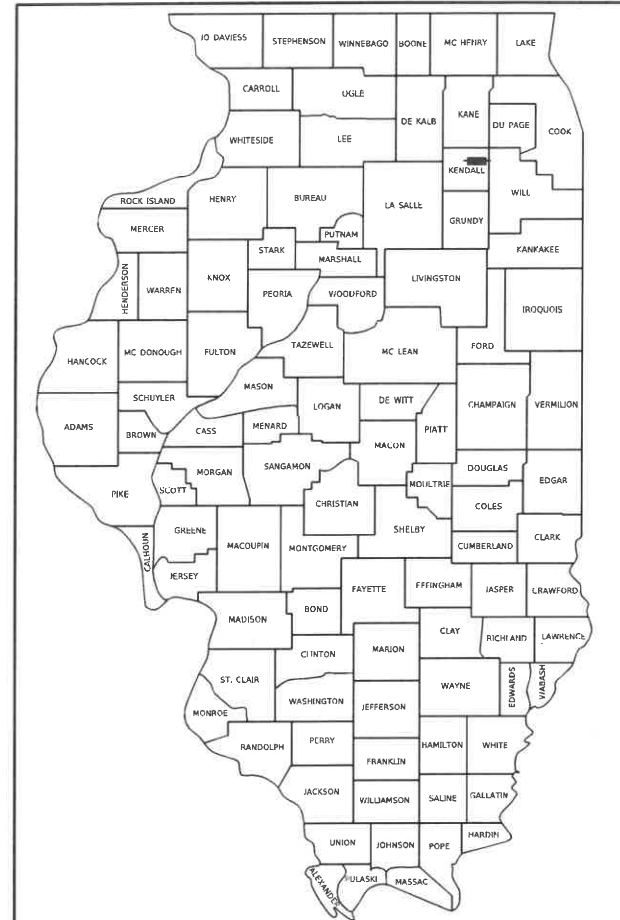
**PLANS FOR PROPOSED
TREE REMOVAL**

**FAU ROUTE 2514 / COLLINS ROAD
FAU ROUTE 3792 / MINKLER ROAD
FAU ROUTE 2507 / GROVE ROAD
SECTION 22-00000-02-GM**

**TREE REMOVAL
KENDALL COUNTY**



LOCATION MAP
(NOT TO SCALE)



LOCATION OF SECTION INDICATED THIS: - [Symbol]



2363 SEQUOIA DRIVE, SUITE 101 | AURORA, ILLINOIS 60506
Phone: 630.553.7560 | Toll Free: 800.728.7805 | Fax: 630.553.7646 | HRGreen.com
ILLINOIS PROFESSIONAL DESIGN FIRM #184-001322

**AGENCY RESPONSIBLE
FOR LETTING**

APPROVED JULY 22, 2022
Jason M. Roitburd
KENDALL COUNTY ENGINEER

Jason M. Roitburd
JASON M. ROITBURD, P.E.
NO. 062-065592
EXPIRES: 11/30/2023
HR GREEN, INC.



ALIGNMENTS

COLLINS ROAD

DESCRIPTION	STATION	NORTHING	EASTING
POT	200+12.29	1,819,071.23	968,799.70
PC	226+57.13	1,818,292.53	971,327.31
PI	228+24.59	1,818,243.22	971,487.34
PT	229+88.97	1,818,248.75	971,654.71
POT (CL MINKLER ROAD)	235+51.08 (127+63.52)	1,818,267.29	972,216.52
PC	273+57.49	1,818,392.83	976,020.86
PI	276+51.63	1,818,402.53	976,314.84
PT	279+29.64	1,818,251.51	976,567.25
PC	289+39.00	1,817,733.29	977,433.43
PI	292+18.60	1,817,589.74	977,673.37
PT	294+84.28	1,817,591.45	977,952.96
POT (CL GROVE ROAD)	321+35.52 (22+00.00)	1,817,607.65	980,604.16
POT	331+04.90	1,817,613.49	981,573.51

MINKLER ROAD

DESCRIPTION	STATION	NORTHING	EASTING
POT	95+42.83	1,815,202.49	971,728.73
PC	98+00.54	1,815,389.43	971,906.12
PI	102+85.80	1,815,741.43	972,240.15
PT	107+22.81	1,816,226.67	972,235.61
POT (CL COLLINS ROAD)	127+63.52 (235+51.08)	1,818,267.29	972,216.52
PC	135+07.99	1,819,011.73	972,210.53
PI	135+96.89	1,819,100.63	972,209.82
PT	136+85.73	1,819,189.41	972,214.37
PC	142+05.90	1,819,708.89	972,240.99
PI	142+96.85	1,819,799.72	972,245.65
PT	143+87.74	1,819,890.67	972,244.79
PC	167+06.00	1,822,208.82	972,222.98
PI	168+88.49	1,822,391.30	972,221.26
PT	107+66.10	1,822,560.05	972,290.77
PC	171+46.12	1,822,634.03	972,321.24
PI	173+18.72	1,822,793.62	972,386.97
PT	174+87.55	1,822,966.14	972,392.05
POT	176+43.44	1,823,121.97	972,396.63

GROVE ROAD

DESCRIPTION	STATION	NORTHING	EASTING
POT	1600+00.00	1,817,172.82	980,616.95
PC	1602+58.73	1,817,431.11	980,601.88
PI	1603+09.94	1,817,482.23	980,598.89
PT	1603+60.17	1,817,529.47	980,579.12

BENCHMARKS

SOURCE BENCHMARK:
OSWEGO 0003 - ARBOR GATE
BERNSTEIN MONUMNET
ELEVATION: 645.01 (NAVD88)

BENCHMARK "A":
FOUND "X" CUT IN TOP OF CURB
ELEV: 649.74 (NAVD88)

BENCHMARK "B":
CHISLED "X" ON EAST SIDE
OF SANITARY MANHOLE RIM
ELEV: 640.38 (NAVD88)

BENCHMARK "C":
NORTHWEST BURY BOLT
ON FIRE HYDRANT
ELEV: 658.95 (NAVD88)

BENCHMARK "D":
NORTHWEST BURY BOLT
ON FIRE HYDRANT
ELEV: 657.62 (NAVD88)

BENCHMARK "E":
BURY BOLT ON FIRE HYDRANT
ELEV: 658.69 (NAVD88)

BENCHMARK "F":
SOUTHWEST BURY BOLT
ON FIRE HYDRANT
ELEV: 651.17 (NAVD88)

BENCHMARK "G":
CHISLED "X" ON EAST SIDE
OF WATER VALVE VAULT RIM
ELEV: 630.58 (NAVD88)

BENCHMARK "H":
ARROW BOLT ON FIRE HYDRANT
ELEV: 638.07 (NAVD88)

BENCHMARK "I":
CHISLED "X" IN NORTH SIDE OF
SANITARY MANHOLE RIM, WEST SIDE OF
MINKLER RD, SOUTH OF CELL TOWER
ELEV: 643.80 (NAVD88)

BENCHMARK "J":
CUT "X" IN SOUTHWEST CORNER OF
CONCRETE FOUNDATION OF TRAFFIC
SIGNAL CONTROL BOX
ELEV: 648.88 (NAVD88)

BENCHMARK "K":
CUT "X" IN SOUTH SIDE OF CONCRETE
FOUNDATION OF CENTER GRAIN SILO, E.
SIDE OF MINKLER RD AT
RESIDENCE #4320
ELEV: 650.98 (NAVD88)

HRG PROJECT NO.: 19162
HRG PROJ CONTACT:
FILE NAME: 19162_T1.dwg
PEN TABLE: 19162.tbl



USER NAME = amiller	DESIGNED - JMR	REVISED -
	DRAWN - AJM	REVISED -
PLOT SCALE = 100,0000' / in.	CHECKED - DEB	REVISED -
PLOT DATE = 7/22/2022	DATE - 7/22/2022	REVISED -

**STATE OF ILLINOIS
DEPARTMENT OF TRANSPORTATION**

**TREE REMOVAL
ALIGNMENTS AND BENCHMARKS**

SCALE: SHEET 1 OF 1 SHEETS STA. TO STA.

F.A.U. RTE.	SECTION	COUNTY	TOTAL SHEETS	SHEET NO.
	22-00000-02-GM	KENDALL	8	2
CONTRACT NO.				
ILLINOIS			FED. AID PROJECT	

GENERAL NOTES

THE CONTRACTOR SHALL PROTECT AND CAREFULLY PRESERVE ALL SECTION OR SUBSECTION MONUMENTS, PROPERTY CORNERS, AND REFERENCE MARKERS UNTIL THE OWNER, HIS AGENT, OR AN AUTHORIZED SURVEYOR HAS WITNESSED OR OTHERWISE REFERENCED THEIR LOCATIONS.

ANY REFERENCE TO A STANDARD THROUGHOUT THE PLANS OR SPECIAL PROVISIONS SHALL BE INTERPRETED TO MEAN THE EDITION AS INDICATED BY THE SUBNUMBER SHOWN IN THE LIST OF STANDARDS INCLUDED IN THESE PLANS.

IT IS THE CONTRACTOR'S RESPONSIBILITY TO ASCERTAIN EXISTING FIELD CONDITIONS BEFORE BIDDING ON THE CONTRACT.

THE CONTRACTOR WILL BE REQUIRED TO COMPLY WITH ALL STATE REGULATIONS REGARDING AIR, WATER, AND NOISE POLLUTION. THE CONTRACTOR IS PROHIBITED FROM BURNING ANY MATERIAL WITHIN OR ADJACENT TO THE IMPROVEMENT.

ONLY THOSE TREES DESIGNATED BY THE ENGINEER OR LISTED IN THE TREE REMOVAL SCHEDULE SHALL BE REMOVED. THE CONTRACTOR SHALL PROTECT ALL REMAINING TREES FROM DAMAGE DUE TO HIS OPERATIONS. THE PRESERVATION OF EXISTING TREES IS OF UTMOST IMPORTANCE.

THE EXISTING TREES TO BE REMOVED SHALL INCLUDE STUMP REMOVAL OR STUMP GRINDING IN ITS ENTIRETY. TEMPORARY EROSION CONTROL SEEDING SHALL BE PLACED IN TREE REMOVAL AREAS OR AS DIRECTED BY THE ENGINEER. TEMPORARY EROSION CONTROL SEEDING WILL NOT BE PAID FOR SEPARATELY BUT SHALL BE INCLUDED IN THE COST OF TREE REMOVAL.

AREAS OF TREE REMOVAL, ACRES SHALL BE CONFIRMED BY THE ENGINEER PRIOR TO REMOVAL.

UTILITY CONTACTS

UTILITY COMPANY	CONTACT PERSON	ADDRESS	PHONE NUM
AT&T	CARL DONAHUE	866 ROCK CREEK ROAD PLANO, IL 60545	(630) 573-6414
AT&T	JMC ENGINEERS AND ASSOCIATES, INC. RICH MEYERS	201 S. CRESCENT STREET GILMAN, IL 60938	(815) 265-4056
COMCAST	ROBERT STROLL	688 INDUSTRIAL DRIVE ELMHURST, IL 60126	(630) 600-6213
COMED	PETE KRATZER	1N423 SWIFT ROAD LOMBARD, IL 60148	(630) 424-5704
FOX METRO WATER RECLAMATION DISTRICT	MICHAEL FRANKINO	1135 S. LAKE ST MONTGOMERY, IL 60538	(630) 301-6805
MIDWEST FIBER NETWORKS, LLC	PATRICK GRAHAM	6070 NORTH FILNT ROAD GLENDALE, WI 53209	(414) 672-5612
NICOR	BRUCE KOPPANG	1844 FERRY ROAD NAPERVILLE, IL 60563	(630) 388-3046
VILLAGE OF OSWEGO	JENNIFER HUGHES	100 PARKERS MILL OSWEGO, IL 60543	(630) 551-2366
ILLINOIS DEPARTMENT OF TRANSPORTATION		700 EAST NORRS DRIVE OTTAWA, IL 61350	(815) 434-6131

TREE REMOVAL (6 TO 15 UNITS DIAMETER)

UNITS	LOCATION
COLLINS ROAD - MINKLER ROAD TO BLUE HERON DRIVE	
12.00	STA 237+00.80, 4.38' RT
6.00	STA 238+85.15, 4.78' RT
12.00	STA 238+94.31, 4.69' RT
12.00	STA 240+51.26, 4.23' RT
6.00	STA 240+61.16, 4.64' RT
6.00	STA 242+08.98, 4.49' RT
10.00	STA 242+14.48, 4.48' RT
12.00	STA 242+20.70, 4.78' RT
6.00	STA 246+54.90, 4.28' RT
10.00	STA 246+64.34, 4.52' RT
6.00	STA 246+66.77, 4.74' RT
6.00	STA 248+35.20, 3.88' RT
8.00	STA 248+40.53, 4.49' RT
6.00	STA 248+61.93, 4.28' RT
8.00	STA 248+61.93, 4.28' RT
10.00	STA 248+84.44, 4.22' RT
6.00	STA 250+40.90, 3.83' RT
12.00	STA 250+43.82, 8.60' RT
12.00	STA 250+51.37, 4.08' RT
8.00	STA 255+76.56, 3.61' RT
6.00	STA 260+56.56, 3.78' RT
10.00	STA 262+88.89, 3.32' RT
12.00	STA 262+88.89, 3.32' RT
6.00	STA 265+24.36, 3.46' RT
6.00	STA 271+42.29, 2.95' RT
12.00	STA 272+21.66, 43.49' LT
6.00	STA 272+22.61, 37.76' LT
6.00	STA 272+22.85, 51.96' LT
12.00	STA 273+09.97, 7.58' RT
6.00	STA 273+26.56, 7.78' RT
8.00	STA 273+46.41, 8.78' RT
6.00	STA 273+50.31, 8.56' RT
6.00	STA 274+66.88, 3.96' RT
6.00	STA 274+99.19, 0.48' LT
6.00	STA 275+18.11, 3.50' LT
6.00	STA 275+18.11, 3.50' LT
10.00	STA 275+18.11, 3.50' LT
10.00	STA 275+18.11, 3.50' LT
12.00	STA 275+18.11, 3.50' LT
6.00	STA 275+33.88, 5.81' LT
6.00	STA 275+65.85, 10.69' LT
6.00	STA 275+65.85, 10.69' LT
6.00	STA 275+79.70, 13.45' LT
6.00	STA 275+79.70, 13.45' LT
6.00	STA 275+85.17, 14.88' LT
6.00	STA 275+93.33, 16.91' LT
6.00	STA 276+32.22, 28.07' LT
6.00	STA 276+51.51, 34.92' LT
6.00	STA 276+76.46, 41.80' LT
6.00	STA 277+28.52, 62.19' LT
6.00	STA 282+39.21, 64.83, LT
7.00	STA 284+67.26, 231.54' RT
12.00	STA 284+69.66, 268.24' RT
6.00	STA 284+76.10, 260.53' RT
12.00	STA 285+01.26, 105.69' RT
10.00	STA 285+01.26, 105.69' RT
8.00	STA 285+01.26, 105.69' RT
8.00	STA 285+06.05, 55.03' RT
8.00	STA 285+06.05, 55.03' RT
6.00	STA 285+06.05, 55.03' RT
10.00	STA 285+15.57, 40.00' RT
10.00	STA 285+15.57, 40.00' RT
8.00	STA 285+15.57, 40.00' RT
6.00	STA 285+15.57, 40.00' RT
7.00	STA 285+16.13, 36.33' RT
7.00	STA 285+16.13, 36.33' RT
7.00	STA 285+16.13, 36.33' RT
7.00	STA 285+16.13, 36.33' RT
8.00	STA 285+20.62, 49.27' RT
7.00	STA 285+49.23, 120.46' RT
9.00	STA 285+70.34, 58.10' RT
6.00	STA 285+88.42, 54.32' RT
10.00	STA 285+89.85, 9.85' LT
12.00	STA 285+92.90, 1.97' LT
12.00	STA 285+92.90, 1.97' LT
12.00	STA 285+93.09, 21.93' LT
8.00	STA 285+95.03, 40.55' RT
14.00	STA 285+96.91, 12.67' LT
8.00	STA 285+97.97, 60.98' RT
7.00	STA 285+99.33, 39.99' RT
7.00	STA 285+99.45, 65.11' RT
9.00	STA 285+99.45, 65.11' RT
7.00	STA 285+99.93, 31.96' RT

10.00	STA 286+00.53, 30.17' RT
8.00	STA 286+06.07, 3.06' LT
7.00	STA 286+06.07, 3.06' LT
7.00	STA 286+12.09, 18.25' RT
11.00	STA 286+12.09, 18.25' RT
7.00	STA 286+15.21, 7.87' RT
7.00	STA 286+16.62, 13.66' LT
7.00	STA 286+16.88, 29.57' LT
7.00	STA 286+18.43, 7.27' LT
13.00	STA 286+23.11, 40.68' LT
6.00	STA 286+23.11, 40.68' LT
6.00	STA 286+23.11, 40.68' LT
6.00	STA 286+24.95, 22.66' LT
10.00	STA 286+24.95, 22.66' LT
10.00	STA 286+24.95, 22.66' LT
795.00	SUBTOTAL

COLLINS ROAD - BLUE HERON DRIVE TO GROVE ROAD

8.00	STA 308+21.58, 0.60' LT
8.00	STA 308+36.68, 0.51' LT
8.00	STA 308+51.81, 0.61' LT
7.00	STA 308+66.70, 0.70' LT
8.00	STA 308+81.65, 0.59' LT
6.00	STA 308+97.86, 0.72' LT
8.00	STA 309+12.62, 0.70' LT
8.00	STA 309+27.74, 0.70' LT
8.00	STA 309+42.28, 0.57' LT
8.00	STA 309+58.12, 0.69' LT
7.00	STA 309+73.17, 0.73' LT
8.00	STA 309+87.86, 0.69' LT
8.00	STA 310+03.78, 0.86' LT
7.00	STA 310+18.55, 0.72' LT
8.00	STA 310+33.25, 0.68' LT
8.00	STA 310+48.99, 0.72' LT
8.00	STA 310+64.21, 0.80' LT
8.00	STA 310+79.10, 0.73' LT
8.00	STA 310+93.96, 0.86' LT
7.00	STA 311+09.14, 0.71' LT
8.00	STA 311+24.74, 0.78' LT
7.00	STA 311+38.86, 0.64' LT
8.00	STA 311+54.89, 0.71' LT
8.00	STA 311+69.64, 0.86' LT
8.00	STA 311+85.59, 0.86' LT
8.00	STA 312+00.03, 0.83 LT
8.00	STA 312+16.04, 0.66 LT
8.00	STA 312+30.77, 0.82 LT
8.00	STA 312+45.85, 0.82 LT
8.00	STA 312+61.39, 0.78 LT
8.00	STA 312+91.60, 0.90 LT
8.00	STA 313+06.74, 0.74 LT
8.00	STA 313+21.67, 0.83 LT
8.00	STA 313+36.54, 0.79 LT
8.00	STA 313+52.21, 0.59 LT
8.00	STA 313+66.55, 0.75 LT
8.00	STA 313+81.75, 0.75 LT
8.00	STA 313+97.41, 0.76 LT
8.00	STA 314+13.29, 0.66 LT
8.00	STA 314+27.89, 0.69 LT
9.00	STA 314+43.04, 0.81 LT
8.00	STA 314+58.37, 0.73 LT
8.00	STA 314+73.71, 1.00 LT
9.00	STA 314+88.33, 0.51 LT
8.00	STA 315+03.60, 0.54 LT
8.00	STA 315+17.70, 0.92 LT
8.00	STA 315+34.08, 1.02 LT
8.00	STA 315+49.02, 0.93 LT
8.00	STA 315+63.27, 0.90 LT
8.00	STA 315+78.14, 0.93 LT
8.00	STA 315+92.66, 0.84 LT
8.00	STA 316+08.47, 0.63 LT
8.00	STA 316+23.98, 0.92 LT
8.00	STA 316+39.38, 0.87 LT
9.00	STA 316+54.26, 0.87 LT
8.00	STA 316+69.65, 0.87 LT
9.00	STA 316+84.77, 0.85 LT
8.00	STA 316+99.88, 0.99 LT
8.00	STA 317+14.90, 0.96 LT
8.00	STA 317+29.68, 0.97 LT
8.00	STA 317+43.74, 0.88 LT
8.00	STA 317+59.06, 0.84 LT
9.00	STA 317+74.15, 1.12 LT
9.00	STA 317+89.35, 0.91 LT
9.00	STA 318+03.71, 1.14 LT
10.00	STA 318+19.14, 1.03 LT
9.00	STA 318+34.15, 1.01 LT
8.00	STA 318+49.44, 1.04 LT

8.00	STA 318+63.81, 1.21 LT
8.00	STA 318+79.48, 1.09 LT
9.00	STA 319+94.17, 1.22 LT
9.00	STA 319+09.73, 1.29 LT
9.00	STA 319+24.14, 1.29 LT
9.00	STA 319+39.60, 1.40 LT
8.00	STA 319+54.59, 1.32 LT
8.00	STA 319+69.35, 1.25' LT
8.00	STA 319+84.19, 1.24' LT
9.00	STA 319+99.13, 1.17' LT
8.00	STA 320+14.48, 1.14' LT
9.00	STA 320+29.36, 1.23' LT
8.00	STA 320+44.31, 1.18' LT
8.00	STA 320+59.83, 1.36' LT
665.00	SUB-TOTAL

MINKLER ROAD

8.00	STA 126+97.04, 33.33' RT
6.00	STA 127+27.82, 25.95' RT
6.00	STA 130+79.14, 21.56' RT
6.00	STA 130+79.14, 21.56' RT
8.00	STA 130+79.14, 21.56' RT
8.00	STA 130+79.14, 21.56' RT
10.00	STA 130+79.14, 21.56' RT
12.00	STA 131+97.53, 34.51' RT
64.00	SUB-TOTAL

1,524.00 TOTAL

TREE REMOVAL (OVER 15 UNITS DIAMETER)

UNITS	LOCATION
COLLINS ROAD - MINKLER ROAD TO BLUE HERON DRIVE	
18.00	STA 237+06.41, 3.98' RT
18.00	STA 237+14.62, 5.03' RT
24.00	STA 242+26.19, 5.01' RT
18.00	STA 242+31.66, 4.90' RT
32.00	STA 246+61.71, 4.25' RT
36.00	STA 250+45.20, 3.97' RT
18.00	STA 250+67.04, 4.54' RT
30.00	STA 251+41.02, 4.06' RT
48.00	STA 254+98.03, 4.05' RT
16.00	STA 256+45.59, 3.57' RT
18.00	STA 271+04.96, 2.54' RT
18.00	STA 285+33.88, 6.81' LT
21.00	STA 285+70.27, 45.64' RT
18.00	STA 285+94.62, 8.16' LT
333.00	SUB-TOTAL

MINKLER ROAD

16.00	STA 126+76.25, 32.31' RT
24.00	STA 129+92.97, 20.47' RT
32.00	STA 130+21.02, 20.05' RT
30.00	STA 130+94.59, 22.59' RT
24.00	STA 132+28.89, 33.39' RT
32.00	STA 132+92.58, 31.30' RT
18.00	STA 133+21.49, 47.38' RT
176.00	SUB-TOTAL

509.00 TOTAL

TREE REMOVAL, ACRES

UNITS	LOCATION
COLLINS ROAD - PARK DISTRICT PATH CONNECTION	
0.15	STA 266+14, 18.5' RT TO STA 268+59, 10' RT
0.03	STA 273+58, 9.0' RT TO STA 274+23, 6.0' RT
0.05	STA 282+34, 56' LT TO STA 283+21, 49' RT
0.04	STA 283+90, 478' RT TO STA 284+60, 410' RT
0.13	STA 294+21, 0.5' LT TO STA 295+48, 24' RT
0.05	STA 295+19, 91' RT TO STA 295+61, 32' RT
0.63	STA 295+85, 86' RT TO STA 301+61, 37' RT
0.33	STA 303+03, 39' RT TO STA 307+56, 90' RT
1.41	SUB-TOTAL

MINKLER ROAD

0.09	STA 148+81, 10' LT TO STA 150+51, 8.5' LT
1.31	STA 150+33, 32' RT TO STA 159+34, 8' LT
0.85	STA 162+21, 38' RT TO STA 168+10, 33' RT
0.11	STA 168+10, 37' RT TO STA 171+65, 43' RT
2.36	SUB-TOTAL

3.77 TOTAL

HRG PROJECT NO: 19162
HRG PROJ CONTACT:
FILE NAME: 19162-TR_Schedule
PEN TABLE: 19162.tbl



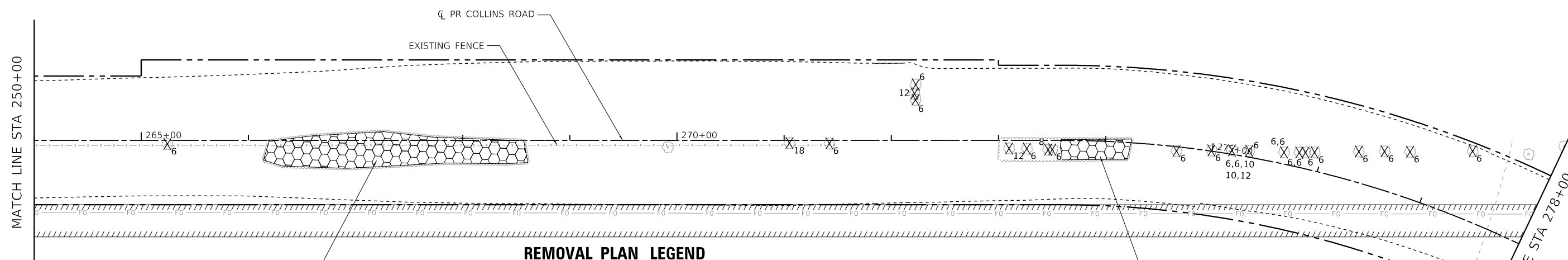
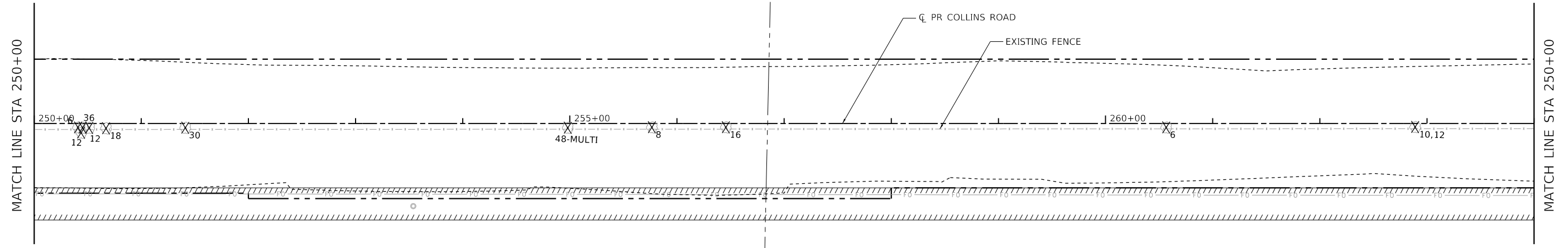
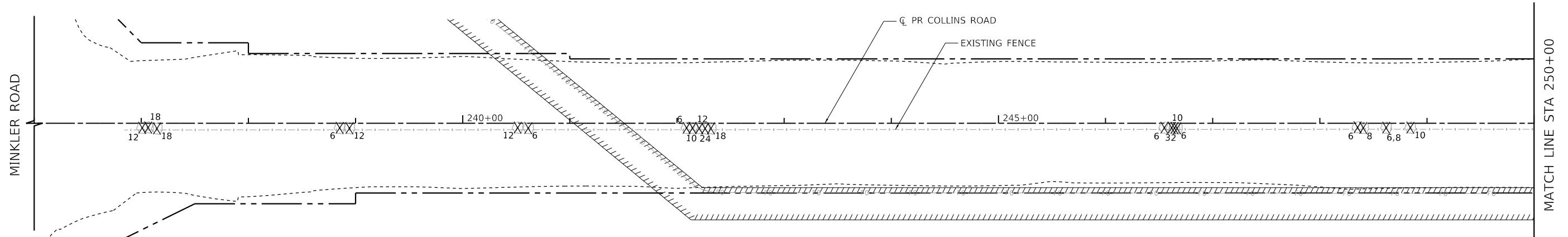
USER NAME = amiller	DESIGNED - JMR	REVISED -
	DRAWN - AJM	REVISED -
PLOT SCALE = 100,0000' / in.	CHECKED - DEB	REVISED -
PLOT DATE = 7/22/2022	DATE - 7/22/2022	REVISED -

**STATE OF ILLINOIS
DEPARTMENT OF TRANSPORTATION**

**TREE REMOVAL
GENERAL NOTES AND SCHEDULE OF QUANTITIES**

SCALE: SHEET 1 OF 1 SHEETS STA. TO STA.

F.A.U. RTE.	SECTION	COUNTY	TOTAL SHEETS	SHEET NO.
	22-00000-02-GM	KENDALL	8	3
CONTRACT NO.				
ILLINOIS FED. AID PROJECT				



TREE REMOV ACRES
0.15 ACRES

TREE REMOV ACRES
0.03 ACRES

REMOVAL PLAN LEGEND

	TREE REMOVAL (UNITS)		PROPOSED RIGHT-OF-WAY
	TREE REMOVAL (ACRES)		PROPOSED TEMPORARY EASEMENT
	EXISTING RIGHT-OF-WAY		PROPOSED PERMANENT EASEMENT
	EXISTING PROPERTY LINE		EXISTING EASEMENT
	EXISTING EASEMENT		CONSTRUCTION LIMITS



HRG PROJECT NO: 19162
 HRG PROJ CONTACT:
 FILE NAME: 19162-PR-Fem01.dgn
 PEN TABLE: 19162.tbl



USER NAME = amiller	DESIGNED - JMR	REVISED -
PLOT SCALE = 100.0000' / in.	DRAWN - AJM	REVISED -
PLOT DATE = 7/22/2022	CHECKED - DEB	REVISED -
	DATE - 7/22/2022	REVISED -

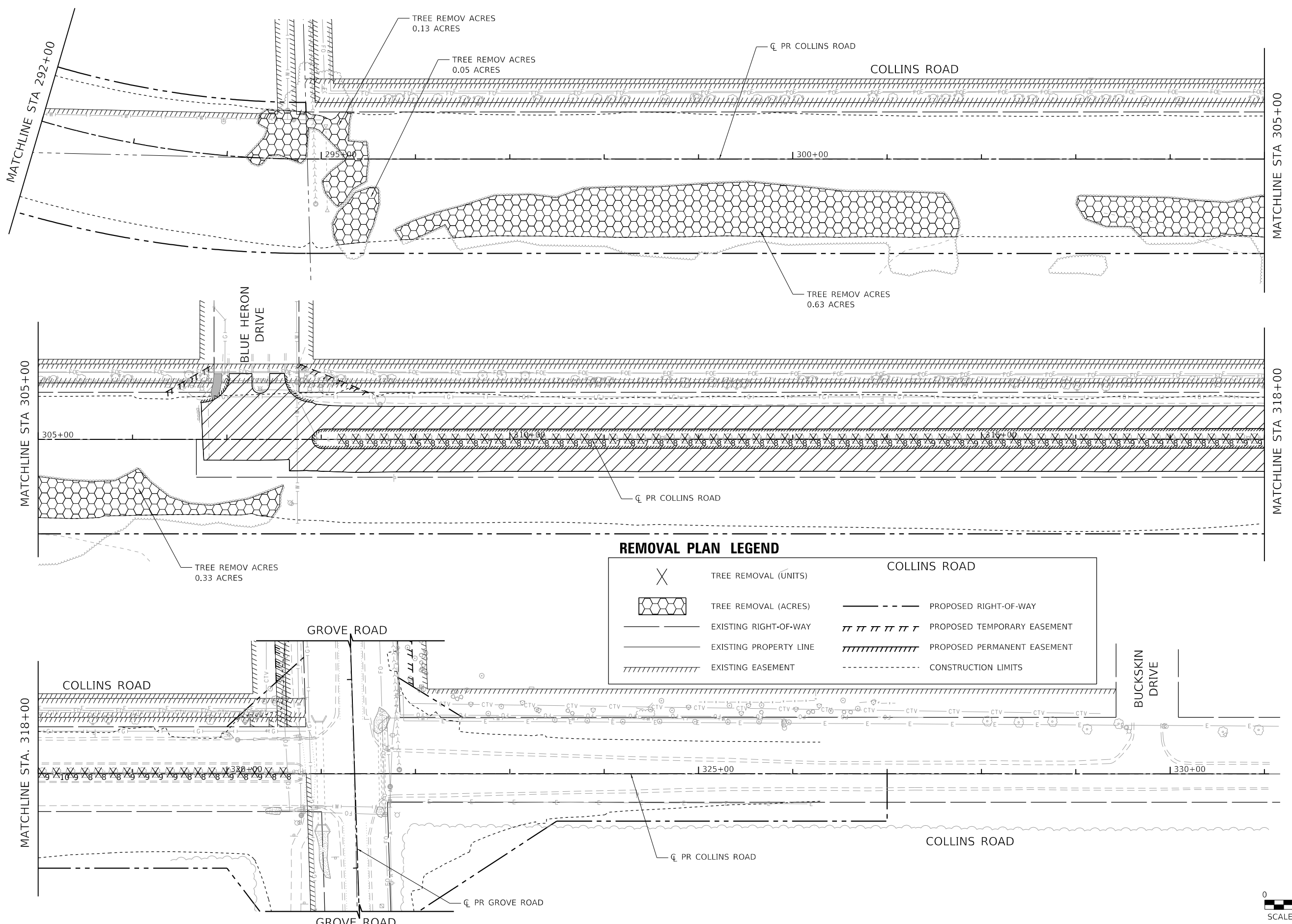
**STATE OF ILLINOIS
DEPARTMENT OF TRANSPORTATION**

**TREE REMOVAL PLAN
COLLINS ROAD**

SCALE: SHEET 1 OF 5 SHEETS STA. TO STA.

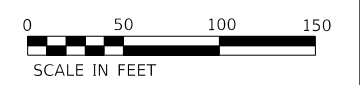
F.A.U. RTE.	SECTION	COUNTY	TOTAL SHEETS	SHEET NO.
2514	22-00000-02-GM	KENDALL	8	4
CONTRACT NO.				

ILLINOIS FED. AID PROJECT



REMOVAL PLAN LEGEND

	TREE REMOVAL (UNITS)		PROPOSED RIGHT-OF-WAY
	TREE REMOVAL (ACRES)		PROPOSED TEMPORARY EASEMENT
	EXISTING RIGHT-OF-WAY		PROPOSED PERMANENT EASEMENT
	EXISTING PROPERTY LINE		CONSTRUCTION LIMITS
	EXISTING EASEMENT		



HRG PROJECT NO.: 19162
 HRG PROJ. CONTACT:
 FILE NAME: 19162-17_r_remo3.dgn
 PEN TABLE: 19162.tbl



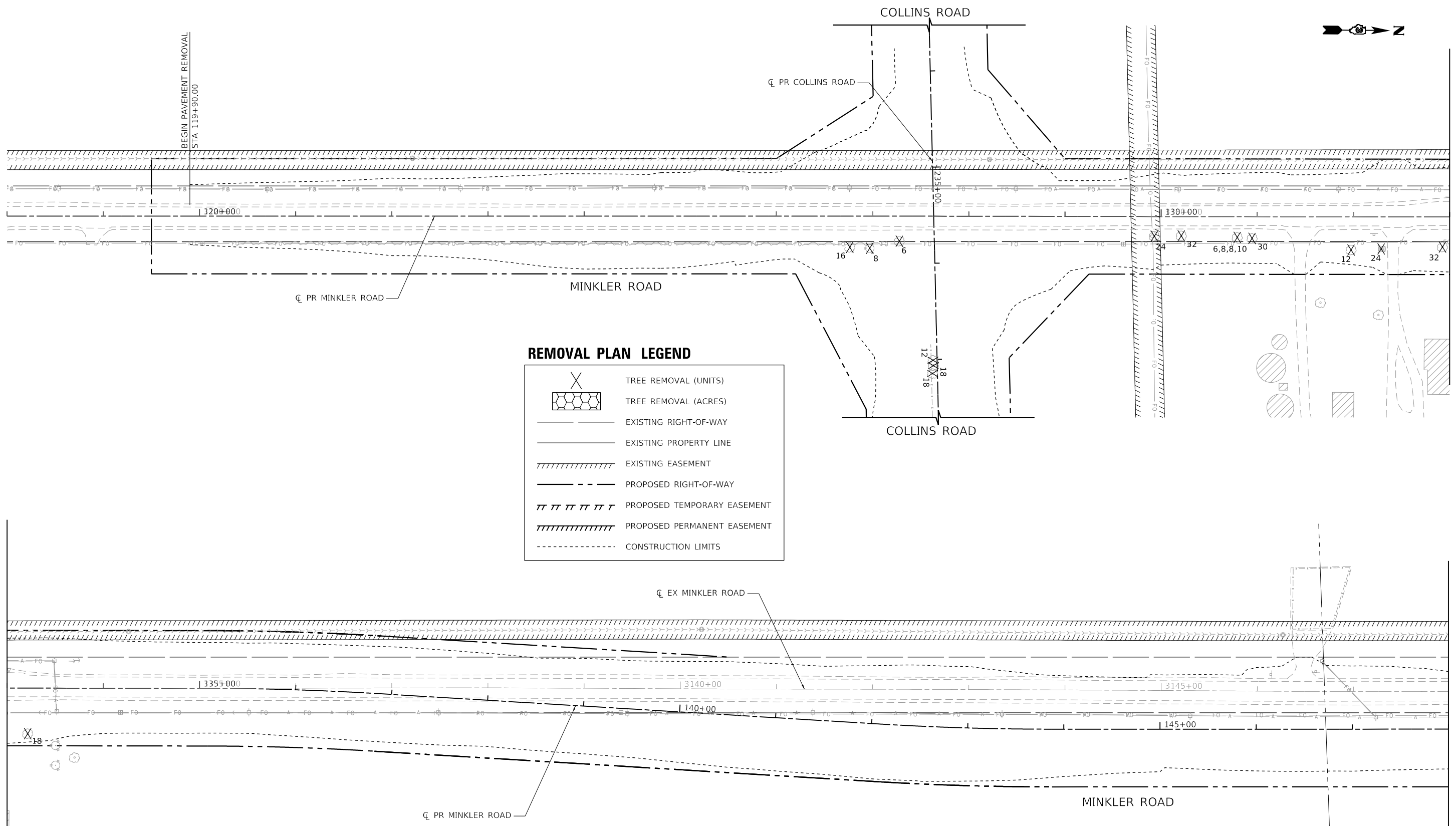
USER NAME = amiller	DESIGNED - JMR	REVISED -
PLOT SCALE = 100,0000' / in.	DRAWN - AJM	REVISED -
PLOT DATE = 7/22/2022	CHECKED - DEB	REVISED -
	DATE - 7/22/2022	REVISED -

**STATE OF ILLINOIS
DEPARTMENT OF TRANSPORTATION**

**TREE REMOVAL PLAN
COLLINS ROAD**

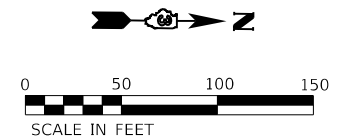
SCALE: SHEET 3 OF 5 SHEETS STA. TO STA.

F.A.U. RTE.	SECTION	COUNTY	TOTAL SHEETS	SHEET NO.
2514	22-00000-02-GM	KENDALL	8	6
CONTRACT NO.				
ILLINOIS FED. AID PROJECT				



MATCHLINE STA. 133+00

MATCHLINE STA. 148+00



HRG PROJECT NO.: 19162
 HRG PROJ. CONTACT:
 FILE NAME: 19162-17-Remo.dgn
 PEN TABLE: 19162.tbl



USER NAME = amiller	DESIGNED - JMR	REVISED -
	DRAWN - AJM	REVISED -
PLOT SCALE = 100,0000' / in.	CHECKED - DEB	REVISED -
PLOT DATE = 7/22/2022	DATE - 7/22/2022	REVISED -

**STATE OF ILLINOIS
 DEPARTMENT OF TRANSPORTATION**

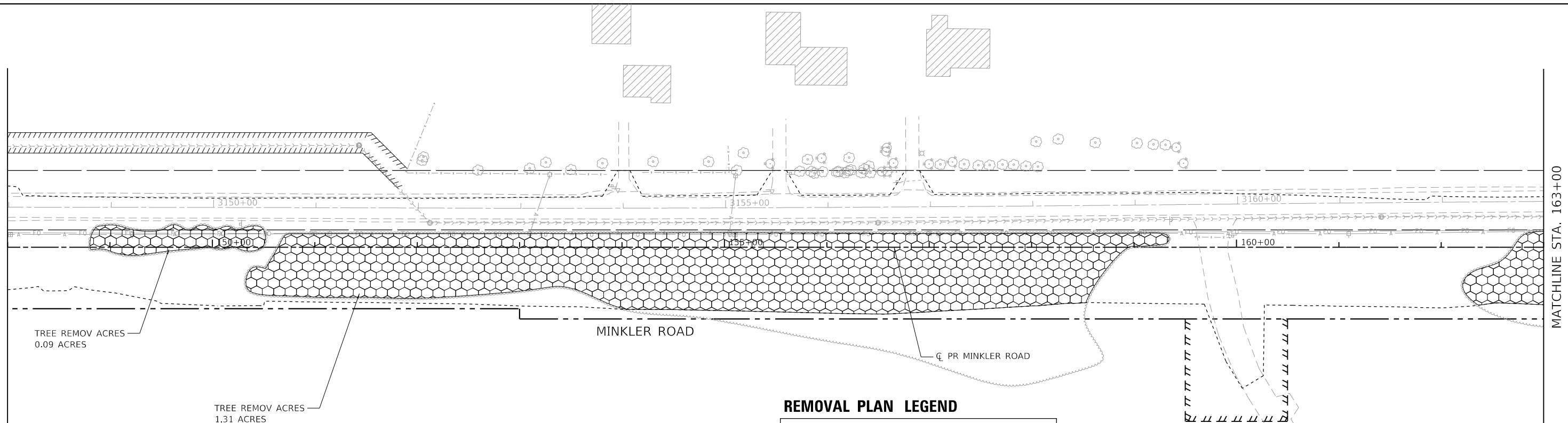
**TREE REMOVAL PLAN
 MINKLER ROAD**

SCALE: SHEET 4 OF 5 SHEETS STA. TO STA.

F.A.U. RTE.	SECTION	COUNTY	TOTAL SHEETS	SHEET NO.
3792	22-00000-02-GM	KENDALL	8	7
CONTRACT NO.				
ILLINOIS FED. AID PROJECT				

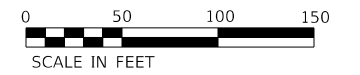
MATCHLINE STA. 148+00

MATCHLINE STA. 163+00

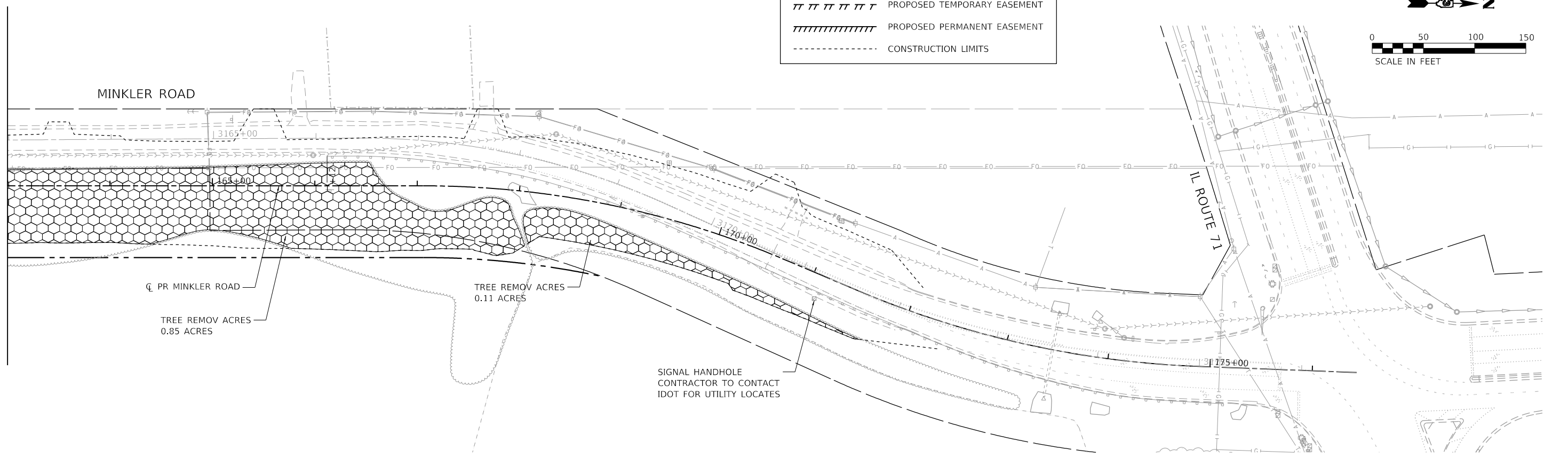


REMOVAL PLAN LEGEND

- TREE REMOVAL (UNITS)
- TREE REMOVAL (ACRES)
- EXISTING RIGHT-OF-WAY
- EXISTING PROPERTY LINE
- EXISTING EASEMENT
- PROPOSED RIGHT-OF-WAY
- PROPOSED TEMPORARY EASEMENT
- PROPOSED PERMANENT EASEMENT
- CONSTRUCTION LIMITS



MATCHLINE STA. 163+00



HRG PROJECT NO.: 19162
 HRG PROJ. CONTACT:
 FILE NAME: 19162-TR-Remov.dgn
 PEN TABLE: 19162.tbl



USER NAME = amiller	DESIGNED - JMR	REVISED -
PLOT SCALE = 100.0031' / in.	DRAWN - AJM	REVISED -
PLOT DATE = 7/22/2022	CHECKED - DEB	REVISED -
	DATE - 7/22/2022	REVISED -

**STATE OF ILLINOIS
 DEPARTMENT OF TRANSPORTATION**

**TREE REMOVAL PLAN
 MINKLER ROAD**

SCALE: SHEET 5 OF 5 SHEETS STA. TO STA.

F.A.U. RTE.	SECTION	COUNTY	TOTAL SHEETS	SHEET NO.
3792	22-00000-02-GM	KENDALL	8	8
CONTRACT NO.				
ILLINOIS FED. AID PROJECT				