



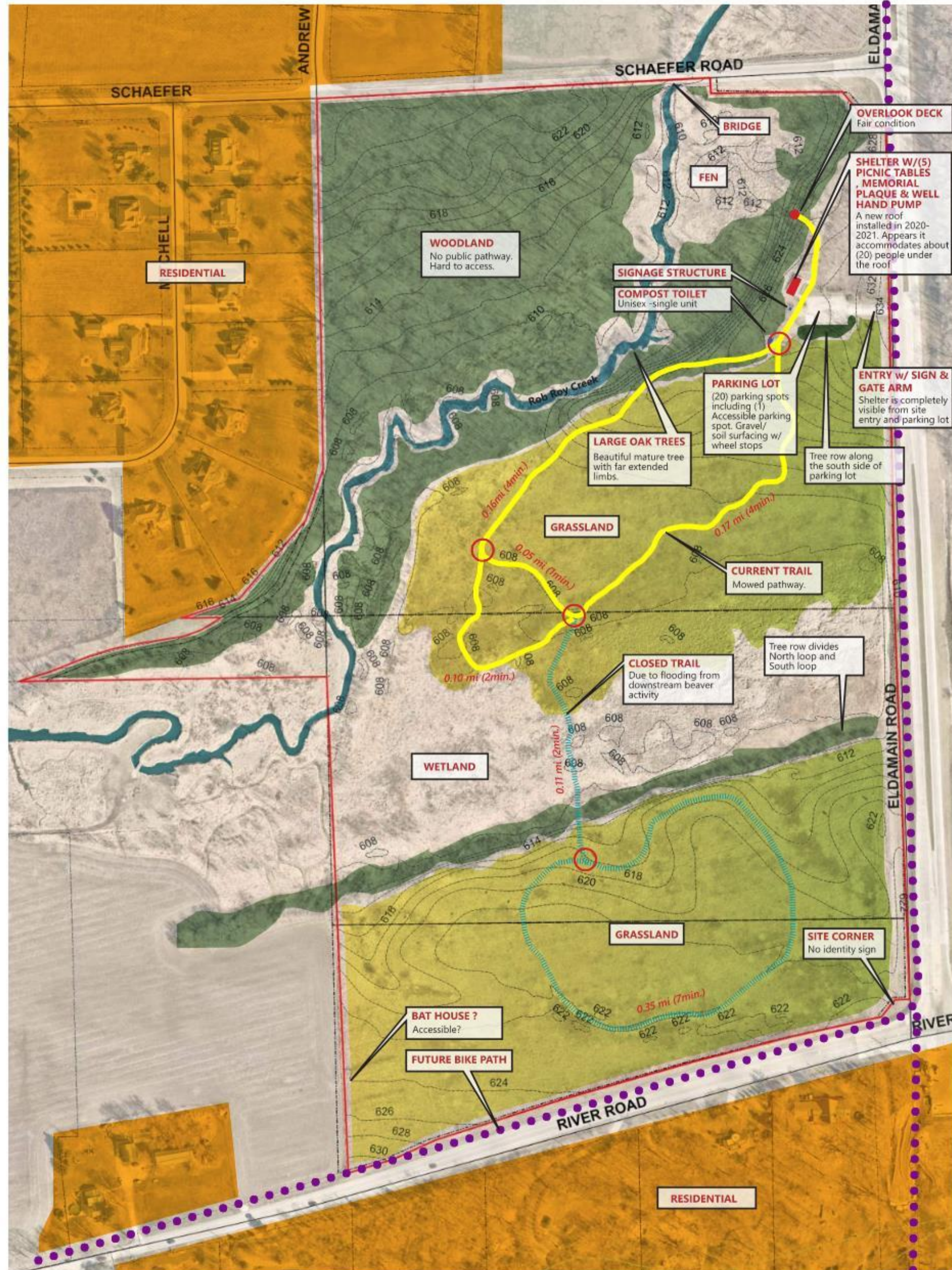
KENDALL COUNTY FOREST PRESERVE DISTRICT

SUBAT FOREST PRESERVE

Finance Committee Meeting: August 25, 2022



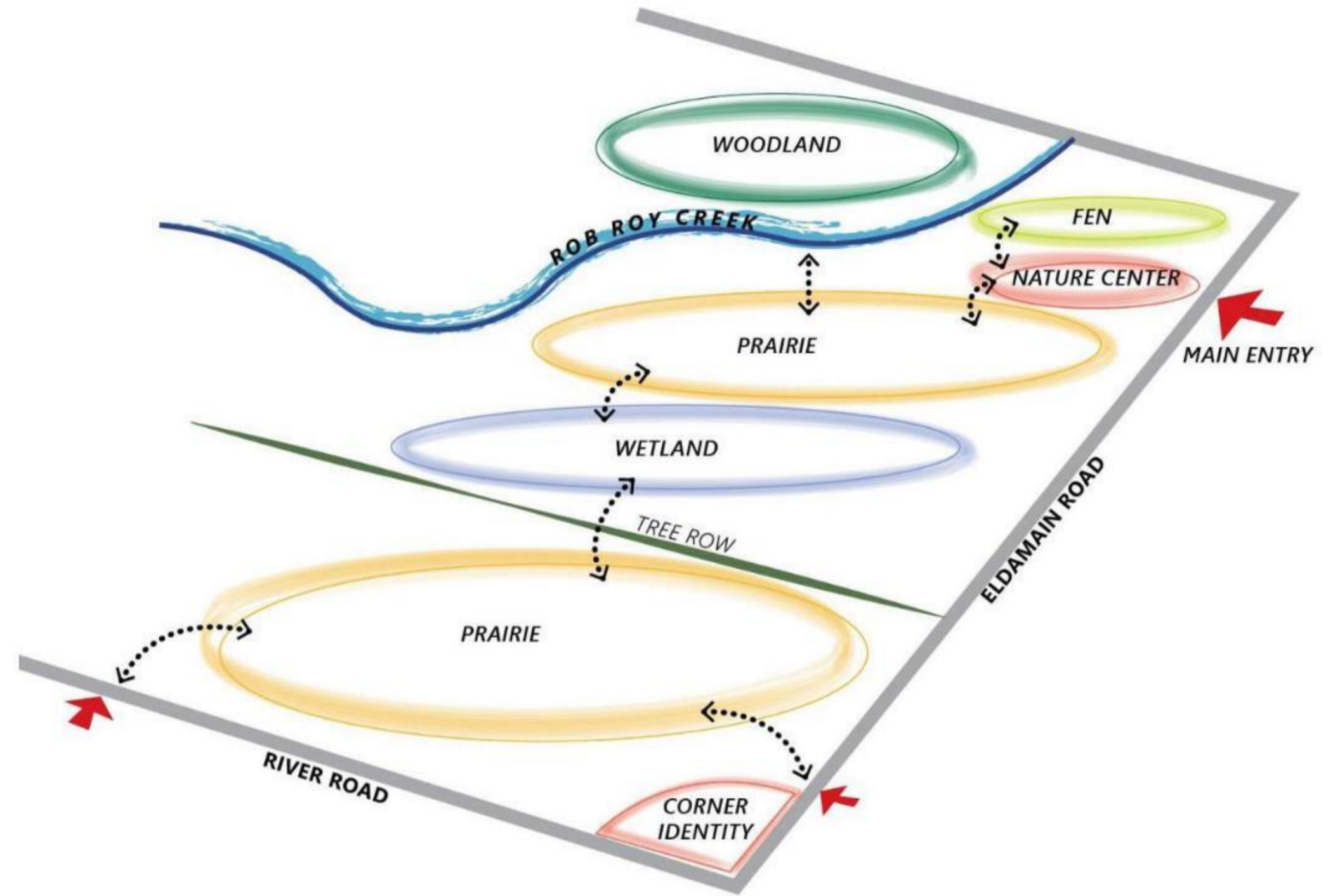
EXISTING CONDITIONS



- Average walking pace : 2.5 - 4 mph.
- Walking speed: 15-22 min./mile
- Resources : "Official Zoning Map of Kendall County", "KKCOM Bike Implementation Status View" & "Kane County Bicycle and Pedestrian Plan".
- "National Flood Hazard Layer FIRMette", "FIRM" & "NWI" don't show the information of wetland or flood area within the site.



SITE OVERALL CONCEPT

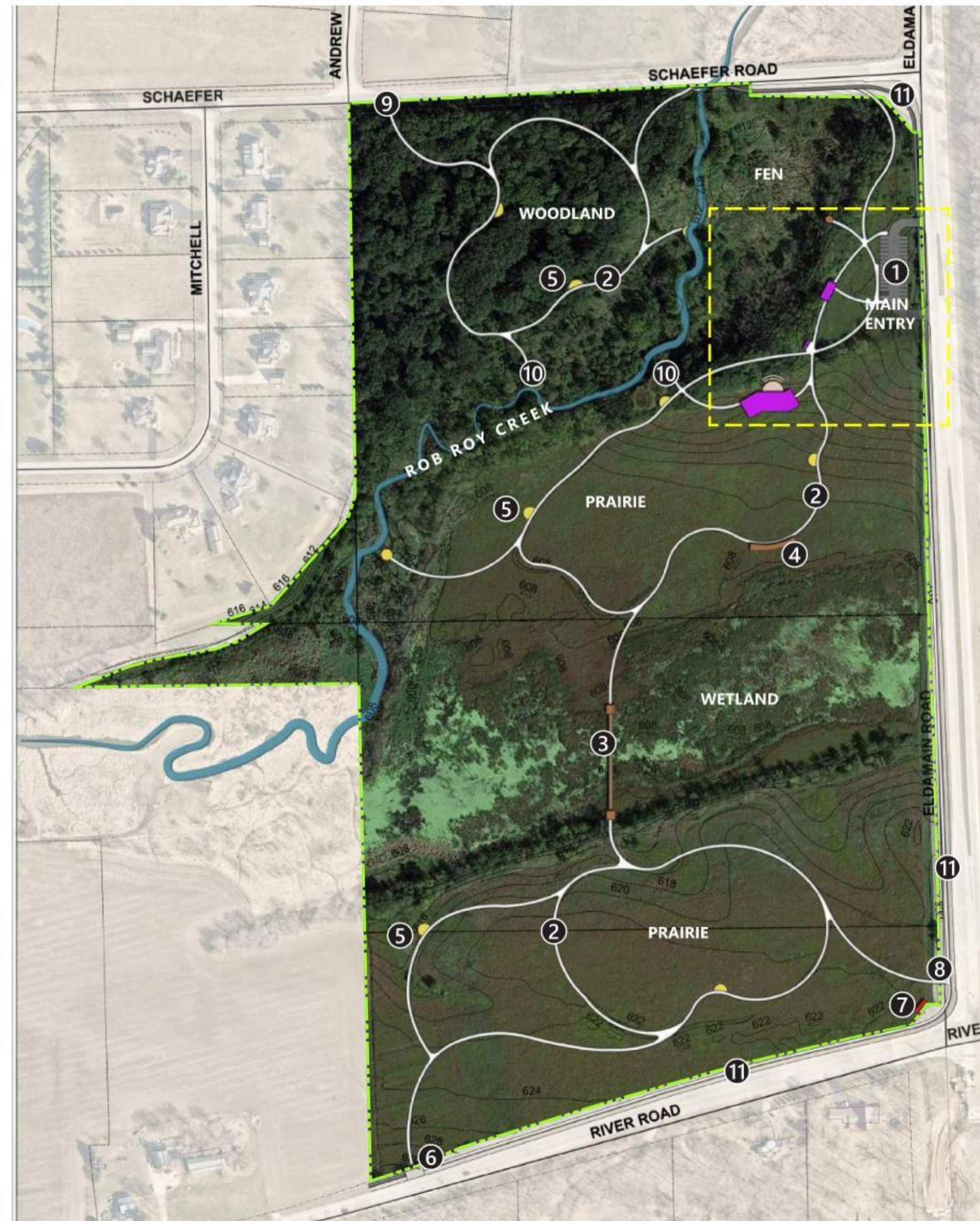


DESIGN PRINCIPLE

- NEW 3 SEASON NATURE CENTER
- IMPROVED SITE AMENITIES
- EXPAND PARKING LOT TO ACCOMMODATE 30+ CARS
- ENHANCE TRAIL ROUTES TO UTILIZE THE ENTIRE SITE
- CREATE EDUCATIONAL STOPS WITH INTERPRETIVE PANELS
- IMPROVE ACCESSIBILITY AND CONNECTIONS BETWEEN FUTURE BIKE TRAIL & NEIGHBORHOODS
- CREATE CORNER IDENTITY

LEGEND

- ❶ Main Entry (Refer to "Entry Layout Plan"): Parking Lot, Nature Center, Information Sign, Compost Toilet, Existing Overlook Deck
- ❷ Trail (Refer to "Trail Route Plan")
- ❸ Boardwalk
- ❹ Overlook Deck
- ❺ Educational Stop with Simple Sign
- ❻ Maintenance Access
- ❼ Monument Sign
- ❽ South Pedestrian Access with Bike Racks
- ❾ North Pedestrian Access
- ❿ Creek Access
- ⓫ Future Bike Trail (by others)



WETLAND BOARDWALK



CREEK-FRONT



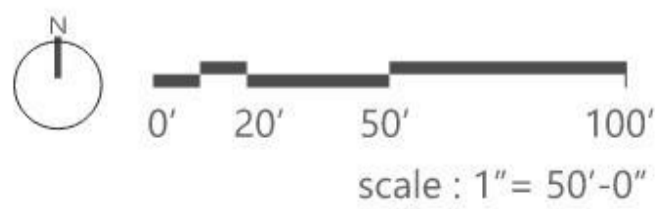
MONUMENT SIGN



SMALL SIGNS FOR EDUCATIONAL STOP

LEGEND

- ① SITE ENTRY WITH VEHICULAR GATE
- ② SECONDARY ENTRY WITH VEHICULAR GATE FOR OCCASIONAL USE
- ③ IDENTITY SIGN
- ④ REGULAR PARKING - (29) SPACES TOTAL
- ⑤ BARRIER FREE PARKING - (2) SPACES
- ⑥ SECURITY BOLLARDS
- ⑦ EXISTING SHELTER
- ⑧ NATURE CENTER
- ⑨ INFORMATION SIGN
- ⑩ EXPANDED EXISTING TOILET
- ⑪ EXISTING OVERLOOK DECK
- ⑫ OPEN LAWN
- ⑬ MULTI-USE TRAIL
- ⑭ OUTDOOR CLASS ROOM
- ⑮ FUTURE BIKE TRAIL (BY OTHERS)

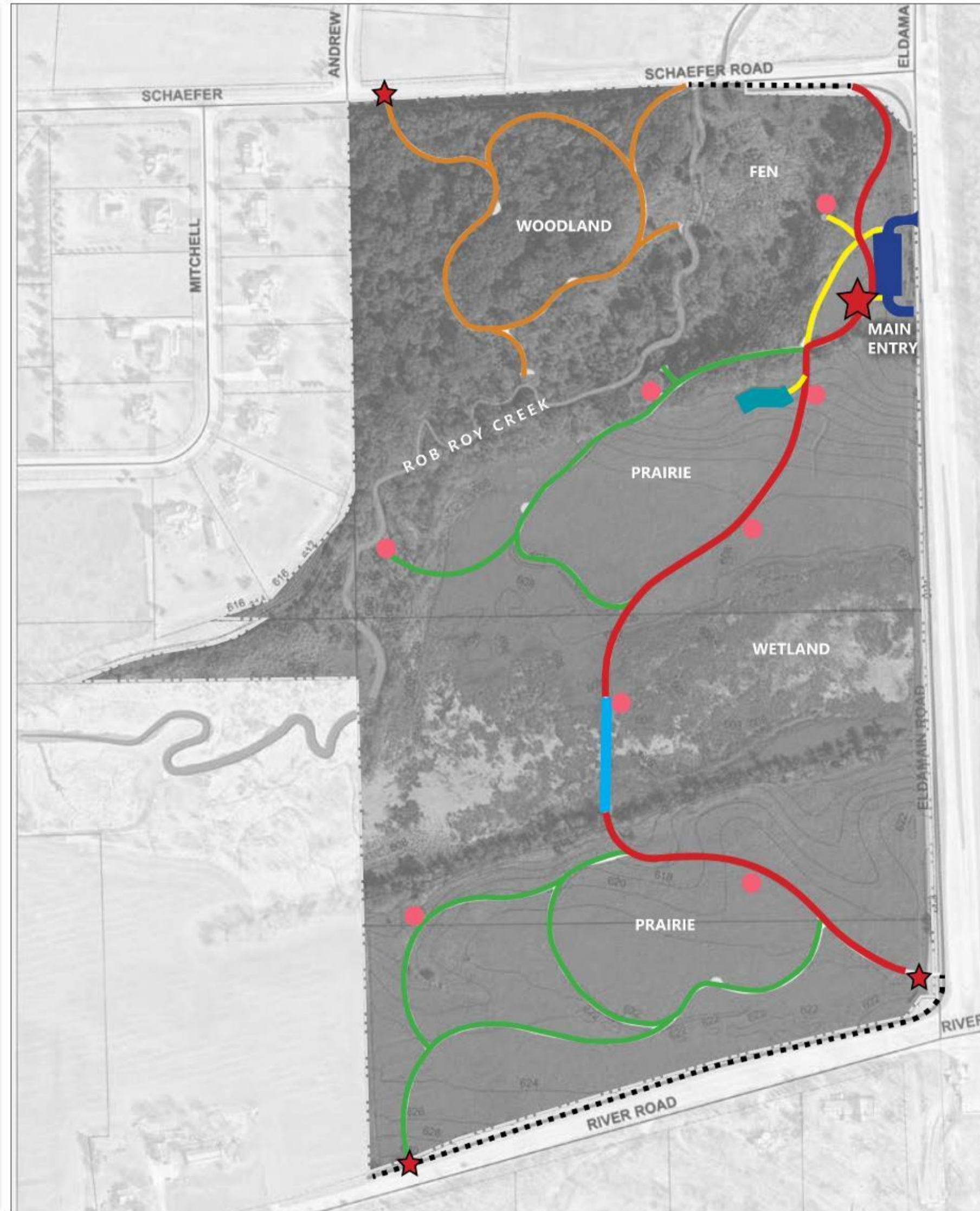


SITE OVERALL CONCEPT
TRAIL LAYOUT DIAGRAM

OSLAD GRANT

GRAPHIC LEGEND

-  Entry
-  Parking Lot (29 spaces total)
-  Nature Center
-  Interpretive Areas (Interpretive Signage)
-  Nature Center Entryway (8' wide, Limestone Screening)
-  Multi-Use Trail (8' wide, Limestone Screening)
-  Boardwalk (8' wide, Wood)
-  Woodland Trail (8' wide, Mulch, Future)
-  Prairie Trail (8' wide, Mowed)
-  Future Bike Trail (by others)



SUBAT NATURE PRESERVE | CONCEPT PLAN



Subat Nature Preserve Center Kendall County Forest Preserve District Conceptual Cost Opinion

March 15, 2022



Overall Cost Summary

-OSLAD GRANT-

Development Item	Master Plan	RTP Grant	OSLAD	Other Amenities
1 Main Entry/ Parking Lot	\$ 89,500		\$ 89,500	
2 Nature Center (3 Season Building)	\$ 940,700		\$ 940,700	
3 Woodland Trail	\$ 51,100			\$ 51,100
4 Prairie - North Trail	\$ -			\$ -
5 RTP grant: Multi-Use Trail	\$ 235,300	\$ 235,300		
6 Prairie - South Trail	\$ -			\$ -
7 Interpretive Areas	\$ 3,000		\$ 3,000	
8 Monument Signage	\$ 31,900			\$ 31,900
9 Restroom Building	\$ 44,500			\$ 44,500
Total Construction Cost:	\$ 1,396,000	\$ 235,300	\$ 1,033,200	\$ 127,500
A/E Design Fees (survey, design, engineering)	10% \$ 139,600	\$ 23,500	\$ 103,300	\$ 12,800
Total Estimated Project Cost:	\$ 1,535,600	\$ 258,800	\$ 1,136,500	\$ 140,300
Total Estimated Project Cost (RTP & OSLAD):		\$1,395,300		
Anticipated Funding:		\$1,455,665		
Difference:		\$60,365		

FUNDING

Endowment	886,665
Wight design fees	(24,500)
Wight OSLAD grant application fees	(6,500)
RTP Grant	200,000
OSLAD Grant	400,000

Total Project Budget:

\$ 1,455,665 includes A/E fees for CDs

NEXT STEPS

- ~~Finance Committee Review Meeting: August 25, 2022~~
- Community Input Meetings
 - September 8, 2022: 4:30pm
 - September 9, 2022: 4:30pm
- Online Survey August 29, 2022-September 12, 2022
- Public Hearing: September 13, 2022: 4:30pm
- Board Resolution: September 20, 2022
- OSLAD Grant Due: September 30, 2022