

---

**BIG GROVE PRECINCT #1**

[CHARLES B. PHILLIPS PUBLIC LIBRARY DISTRICT, 6 N. JACKSON STREET, NEWARK](#)

---

**BRISTOL PRECINCT #1**

[YORKVILLE CONGREGATIONAL CHURCH, 409 CENTER PARKWAY, YORKVILLE](#)

---

**BRISTOL PRECINCT #2**

[YORKVILLE GRADE SCHOOL #115, DOOR #2, 201 W. SOMONAUK STREET, YORKVILLE](#)

---

**BRISTOL PRECINCT #3**

[CROSSPOINTE CHURCH, 8 W. RICKARD DRIVE, OSWEGO](#)

---

**BRISTOL PRECINCT #4**

[GRANDE RESERVE ELEMENTARY SCHOOL #115, DOOR #3, 3142 GRANDE TRAIL, YORKVILLE](#)

---

**BRISTOL PRECINCT #5**

[CROSSPOINTE CHURCH, 8 W. RICKARD DRIVE, OSWEGO](#)

---

**BRISTOL PRECINCT #6**

[YORKVILLE GRADE SCHOOL #115, DOOR #2, 201 W. SOMONAUK STREET, YORKVILLE](#)

---

**BRISTOL PRECINCT #7**

[BRISTOL BAY ELEMENTARY SCHOOL #115, DOOR #3, 427 BRISTOL BAY DRIVE, YORKVILLE](#)

---

**BRISTOL PRECINCT #8**

[YORKVILLE CONGREGATIONAL CHURCH, 409 CENTER PARKWAY, YORKVILLE](#)

---

**BRISTOL PRECINCT #9**

[YORKVILLE GRADE SCHOOL #115, DOOR #2, 201 W. SOMONAUK STREET, YORKVILLE](#)

---

**BRISTOL PRECINCT #10**

[FOX VALLEY FAMILY YMCA, 3875 ELDAMAIN ROAD, PLANO](#)

---

**BRISTOL PRECINCT #11**

[LAKEWOOD CREEK ELEMENTARY SCHOOL #308, DOOR #7, 2301 LAKEWOOD CREEK DRIVE, MONTGOMERY](#)

---

**BRISTOL PRECINCT #12**

[LAKEWOOD CREEK ELEMENTARY SCHOOL #308, DOOR #7, 2301 LAKEWOOD CREEK DRIVE, MONTGOMERY](#)

---

**BRISTOL PRECINCT #13**

[GRANDE RESERVE ELEMENTARY SCHOOL #115, DOOR #3, 3142 GRANDE TRAIL, YORKVILLE](#)

---

**BRISTOL PRECINCT #14**

[LAKEWOOD CREEK ELEMENTARY SCHOOL #308, DOOR #7, 2301 LAKEWOOD CREEK DRIVE, MONTGOMERY](#)

---

**BRISTOL PRECINCT #15**

[BRISTOL BAY ELEMENTARY SCHOOL #115, DOOR #3, 427 BRISTOL BAY DRIVE, YORKVILLE](#)

---

**BRISTOL PRECINCT #16**

[BRISTOL BAY ELEMENTARY SCHOOL #115, DOOR #3, 427 BRISTOL BAY DRIVE, YORKVILLE](#)

---

**BRISTOL PRECINCT #17**

[NEW LIFE CHURCH, 3205 CANNONBALL TRAIL, YORKVILLE](#)

---

**BRISTOL PRECINCT #18**

[NEW LIFE CHURCH, 3205 CANNONBALL TRAIL, YORKVILLE](#)

---

**FOX PRECINCT #1**

[FOX TOWNSHIP BUILDING, 8495 FOX RIVER DRIVE, MILLBROOK](#)

---

**FOX PRECINCT #2**

[FOX TOWNSHIP BUILDING, 8495 FOX RIVER DRIVE, MILLBROOK](#)

---

**KENDALL PRECINCT #1**

[YORKVILLE INTERMEDIATE SCHOOL #115, DOOR #3, 103 E. SCHOOLHOUSE ROAD, YORKVILLE](#)

---

**KENDALL PRECINCT #2**

[YORKVILLE INTERMEDIATE SCHOOL #115, DOOR #3, 103 E. SCHOOLHOUSE ROAD, YORKVILLE](#)

---

**KENDALL PRECINCT #3**

[KENDALL TOWNSHIP BUILDING, 9925B ROUTE 47, YORKVILLE](#)

---

**KENDALL PRECINCT #4**

[KENDALL COUNTY COOPERATIVE EXTENSION SERVICE, 7775B ROUTE 47, YORKVILLE](#)

---

**KENDALL PRECINCT #5**

[KENDALL COUNTY HIGHWAY DEPARTMENT, 6780 ROUTE 47, YORKVILLE](#)

---

**KENDALL PRECINCT #6**

[KENDALL COUNTY HIGHWAY DEPARTMENT, 6780 ROUTE 47, YORKVILLE](#)

---

**LISBON PRECINCT**

[ELBURN CO-OP NEWARK AGRONOMY, 12219 STATE ROUTE 47, NEWARK](#)

---

**LITTLE ROCK PRECINCT #1**

[LAKEWOOD SPRINGS CLUBHOUSE \(NORTH\), 900 LAKEWOOD SPRINGS DRIVE, PLANO](#)

---

**LITTLE ROCK PRECINCT #2**

[PLANO SD #88 ADMINISTRATIVE OFFICE, DOOR #3, 800 S. HALE STREET, PLANO](#)

---

**LITTLE ROCK PRECINCT #3**

[PLANO SD #88 ADMINISTRATIVE OFFICE, DOOR #3, 800 S. HALE STREET, PLANO](#)

---

**LITTLE ROCK PRECINCT #4**

[PLANO HIGH SCHOOL #88, DOOR #6, 704 W. ABE STREET, PLANO](#)

---

**LITTLE ROCK PRECINCT #5**

[PLANO HIGH SCHOOL #88, DOOR #6, 704 W. ABE STREET, PLANO](#)

---

**LITTLE ROCK PRECINCT #6**

[LAKEWOOD SPRINGS CLUBHOUSE \(SOUTH\), 501 MITCHELL DRIVE, PLANO](#)

---

**LITTLE ROCK PRECINCT #7**

[LAKEWOOD SPRINGS CLUBHOUSE \(NORTH\), 900 LAKEWOOD SPRINGS DRIVE, PLANO](#)

---

**LITTLE ROCK PRECINCT #8**

[LAKEWOOD SPRINGS CLUBHOUSE \(SOUTH\), 501 MITCHELL DRIVE, PLANO](#)

---

**NA AU SAY PRECINCT #1**

[AU SABLE GROVE PRESBYTERIAN CHURCH, 5021 WHEELER ROAD, YORKVILLE](#)

---

**NA AU SAY PRECINCT #2**

[PLAINFIELD SOUTH HIGH SCHOOL #202, DOOR #N \(NORTHWEST SIDE\), 7800 W. CATON FARM ROAD, PLAINFIELD](#)

---

**NA AU SAY PRECINCT #3**

[CLUBLANDS CLUBHOUSE, 1901 CLUBLANDS PARKWAY, PLAINFIELD](#)

---

**NA AU SAY PRECINCT #4**

[CLUBLANDS CLUBHOUSE, 1901 CLUBLANDS PARKWAY, PLAINFIELD](#)

---

**NA-AU-SAY PRECINCT #5**

[CLUBLANDS CLUBHOUSE, 1901 CLUBLANDS PARKWAY, PLAINFIELD](#)

---

**NA-AU-SAY PRECINCT #6**

[PLAINFIELD SOUTH HIGH SCHOOL #202, DOOR #N \(NORTHWEST SIDE\), 7800 W. CATON FARM ROAD, PLAINFIELD](#)

---

**OSWEGO PRECINCT #1**

[FOX METRO WASTEWATER RECLAMATION DISTRICT, 682 STATE ROUTE 31, OSWEGO](#)

---

**OSWEGO PRECINCT #2**

[HUNT CLUB ELEMENTARY SCHOOL #308, DOOR #9 \(BACK OF SCHOOL\), 4001 HUNT CLUB DRIVE, OSWEGO](#)

---

**OSWEGO PRECINCT #3**

[PLANK JUNIOR HIGH SCHOOL #308, DOOR #3, 510 SECRETARIAT LANE, OSWEGO](#)

---

**OSWEGO PRECINCT #4**

[OSWEGO EAST HIGH SCHOOL #308, DOOR #45, 1525 HARVEY ROAD, OSWEGO](#)

---

**OSWEGO PRECINCT #5**

[BOULDER HILL ELEMENTARY SCHOOL #308, DOOR #5, 163 BOULDER HILL PASS, MONTGOMERY](#)

---

**OSWEGO PRECINCT #6**

[BOULDER HILL ELEMENTARY SCHOOL #308, DOOR #5, 163 BOULDER HILL PASS, MONTGOMERY](#)

---

**OSWEGO PRECINCT #7**

[PRAIRIE POINT ELEMENTARY SCHOOL #308, DOOR #1, 3650 GROVE ROAD, OSWEGO](#)

---

**OSWEGO PRECINCT #8**

[LONG BEACH ELEMENTARY SCHOOL #308, DOOR #17, 67 LONG BEACH ROAD, MONTGOMERY](#)

---

**OSWEGO PRECINCT #9**

[LONG BEACH ELEMENTARY SCHOOL #308, DOOR #17, 67 LONG BEACH ROAD, MONTGOMERY](#)

---

**OSWEGO PRECINCT #10**

[OSWEGO VILLAGE HALL, 100 PARKERS MILL, OSWEGO](#)

---

**OSWEGO PRECINCT #11**

[OSWEGO VILLAGE HALL, 100 PARKERS MILL, OSWEGO](#)

---

**OSWEGO PRECINCT #12**

[OLD POST ELEMENTARY SCHOOL #308, DOOR #9, 100 OLD POST ROAD, OSWEGO](#)

---

**OSWEGO PRECINCT #13**

[OLD POST ELEMENTARY SCHOOL #308, DOOR #9, 100 OLD POST ROAD, OSWEGO](#)

---

**OSWEGO PRECINCT #14**

[MURPHY JUNIOR HIGH SCHOOL #308, DOOR #1, 26923 W. GRANDE PARK BLVD., PLAINFIELD](#)

---

**OSWEGO PRECINCT #15**

[OSWEGO LIBRARY-MONTGOMERY CAMPUS, 1111 READING DRIVE, MONTGOMERY](#)

---

**OSWEGO PRECINCT #16**

[SOUTHBURY ELEMENTARY SCHOOL #308, DOOR #26, 820 PRESTON LANE, OSWEGO](#)

---

**OSWEGO PRECINCT #17**

[THOMPSON JUNIOR HIGH SCHOOL #308, DOOR #12 \(BACK OF SCHOOL\), 440 BOULDER HILL PASS, OSWEGO](#)

---

**OSWEGO PRECINCT #18**

[OSWEGO EAST HIGH SCHOOL #308, DOOR #45, 1525 HARVEY ROAD, OSWEGO](#)

---

**OSWEGO PRECINCT #19**

[OSWEGO EAST HIGH SCHOOL #308, DOOR #45, 1525 HARVEY ROAD, OSWEGO](#)

---

**OSWEGO PRECINCT #20**

[THOMPSON JUNIOR HIGH SCHOOL #308, DOOR #12 \(BACK OF SCHOOL\), 440 BOULDER HILL PASS, OSWEGO](#)

---

**OSWEGO PRECINCT #21**

[PRAIRIE POINT ELEMENTARY SCHOOL #308, DOOR #1, 3650 GROVE ROAD, OSWEGO](#)

---

**OSWEGO PRECINCT #22**

[FOX CHASE ELEMENTARY SCHOOL #308, DOOR #8, 260 FOX CHASE DRIVE NORTH, OSWEGO](#)

---

**OSWEGO PRECINCT #23**

[OSWEGO LIBRARY-MONTGOMERY CAMPUS, 1111 READING DRIVE, MONTGOMERY](#)

---

**OSWEGO PRECINCT #24**

[OLD POST ELEMENTARY SCHOOL #308, DOOR #9, 100 OLD POST ROAD, OSWEGO](#)

---

**OSWEGO PRECINCT #25**

[HUNT CLUB ELEMENTARY SCHOOL #308, DOOR #9 \(BACK OF SCHOOL\), 4001 HUNT CLUB DRIVE, OSWEGO](#)

---

**OSWEGO PRECINCT #26**

[PRAIRIE POINT ELEMENTARY SCHOOL #308, DOOR #1, 3650 GROVE ROAD, OSWEGO](#)

---

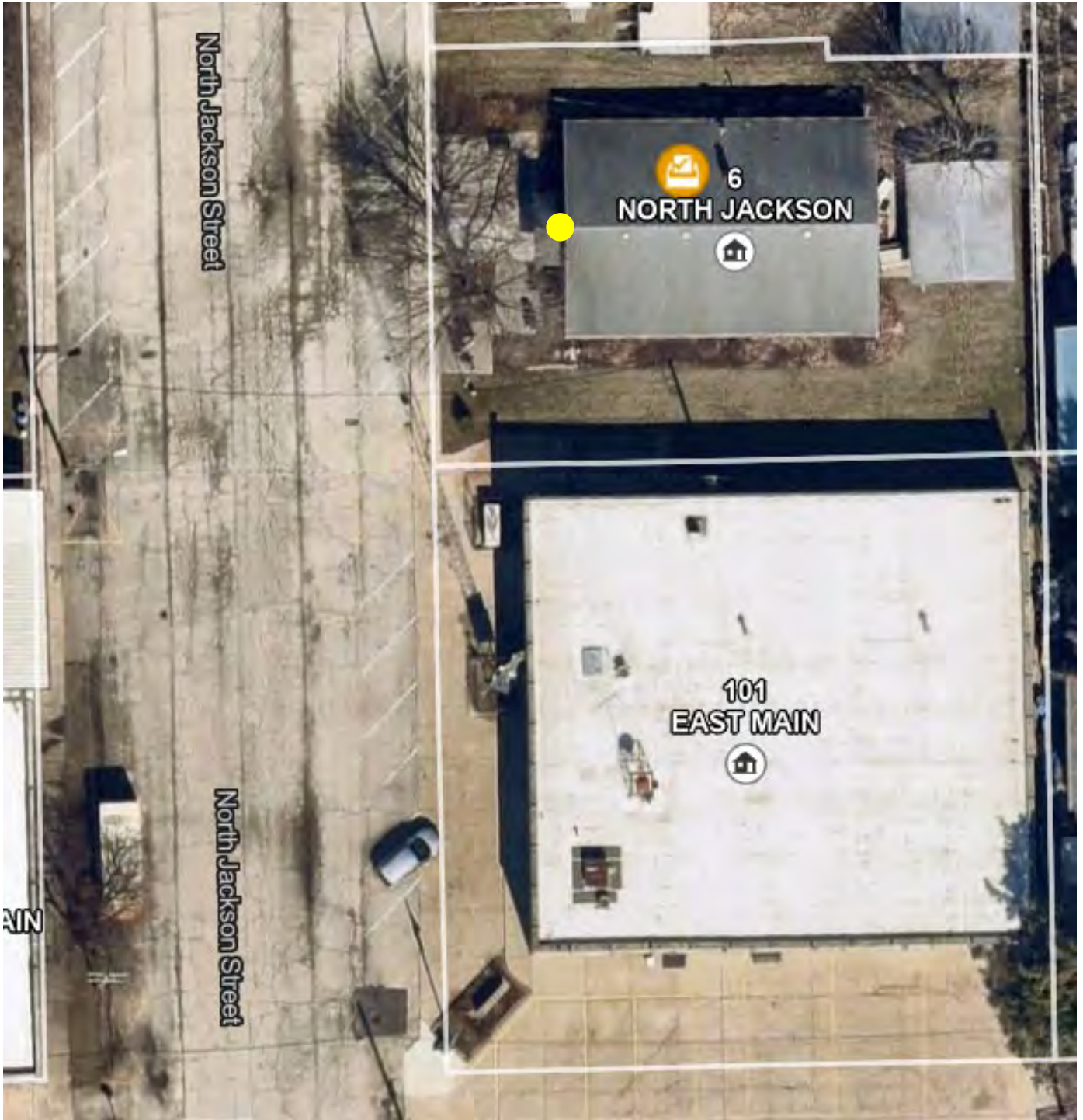


# Charles B. Phillips Public Library

6 N. Jackson Street, Newark

Yellow ● = polling place door entrance

**BIG GROVE PRECINCT 1**





# Yorkville Congregational Church

409 Center Parkway, Yorkville

**Pink ● = parking entrance**

**Yellow ● = polling place door entrance**

**BRISTOL PRECINCTS 1 & 8**





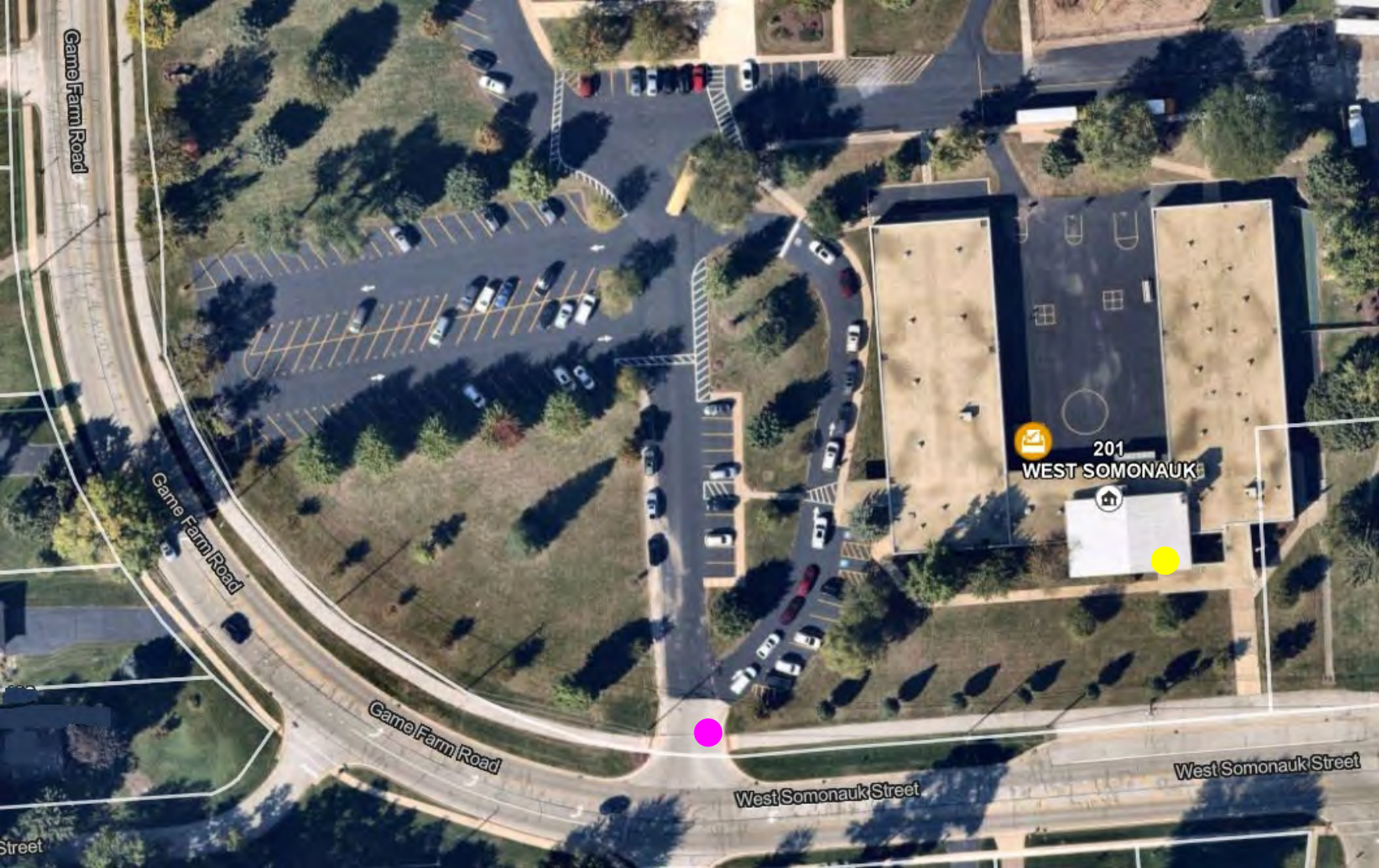
**Yorkville Grade School #115, Door #2**

201 W. Somonauk Street, Yorkville

**Pink ● = parking entrance**

**Yellow ● = polling place door entrance**

**BRISTOL PRECINCTS 2, 6 & 9**





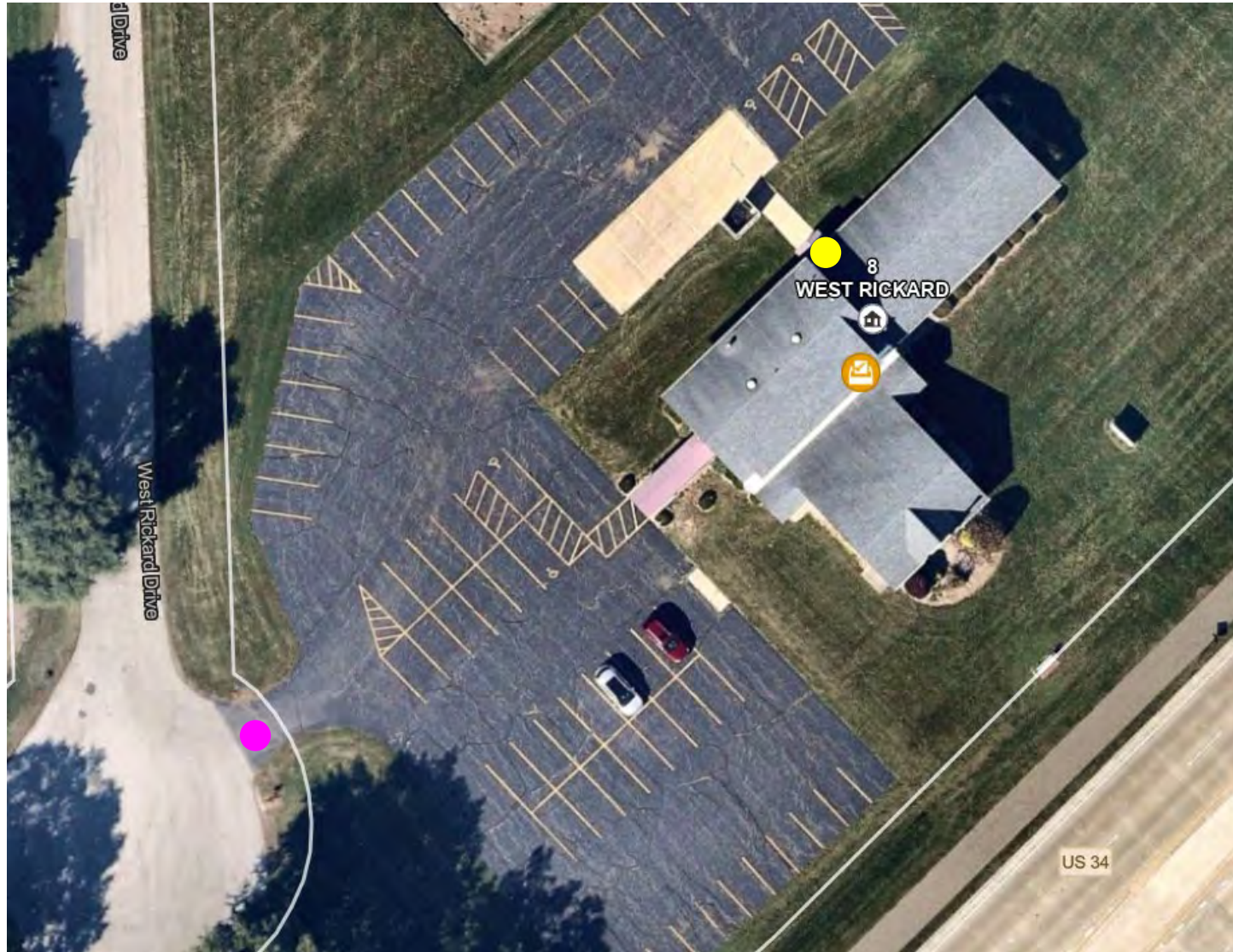
# Crosspointe Church

8 W. Rickard Drive, Oswego

**Pink ● = parking entrance**

**Yellow ● = polling place door entrance**

**BRISTOL PRECINCTS 3 & 5**





# Grande Reserve Elementary School #115, Door #3

3142 Grande Trail, Yorkville

Pink ● = parking entrance

Yellow ● = polling place door entrance

BRISTOL PRECINCTS 4 & 13



# Bristol Bay Elementary School #115, Door #3

427 Bristol Bay Drive, Yorkville

**Pink ● = parking entrance**

**Yellow ● = polling place door entrance**

**BRISTOL PRECINCTS 7, 15 & 16**





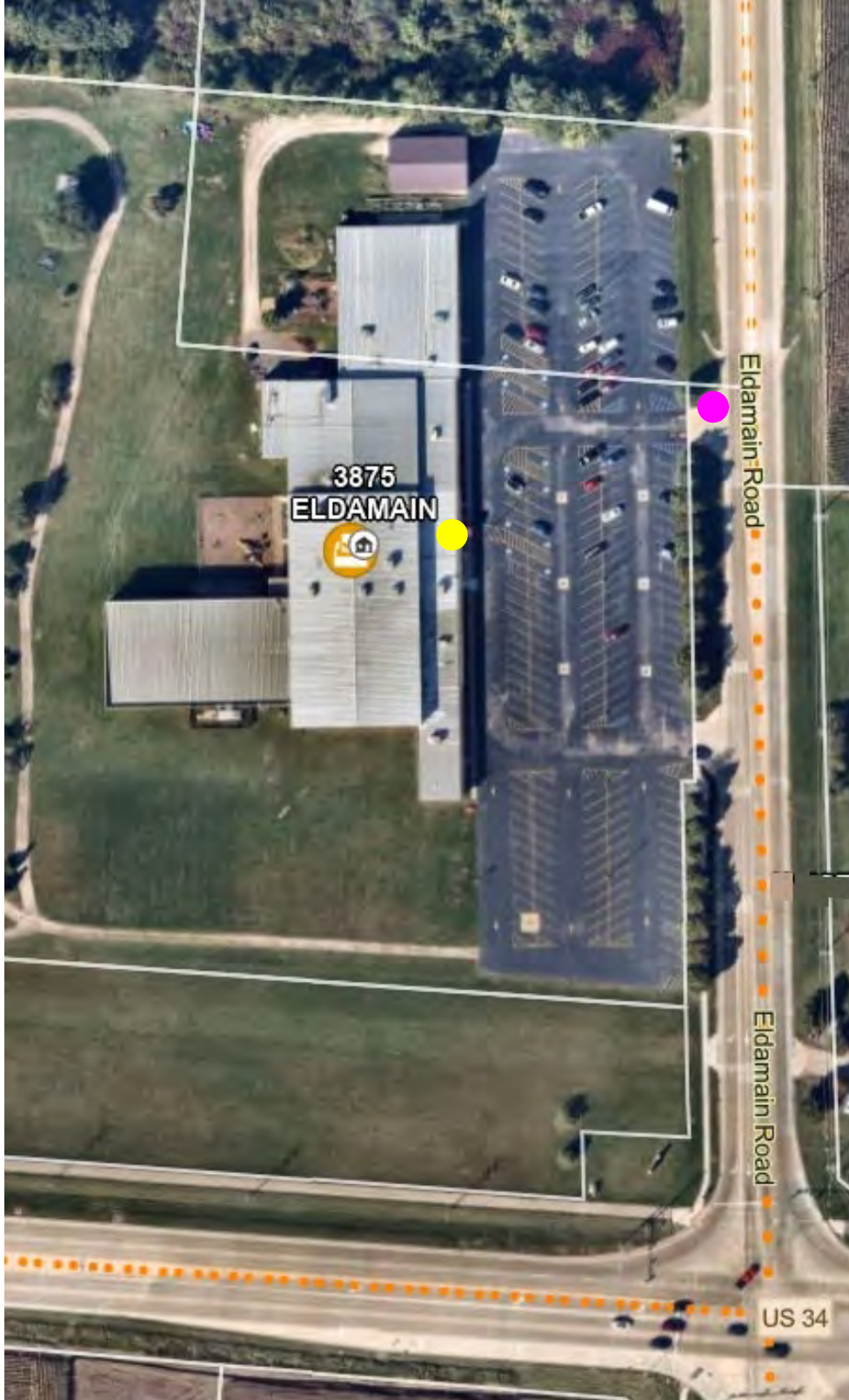
# Fox Valley YMCA

3875 Eldamain Road, Plano

**Pink ● = parking entrance**

**Yellow ● = polling place door entrance**

## BRISTOL PRECINCT 10





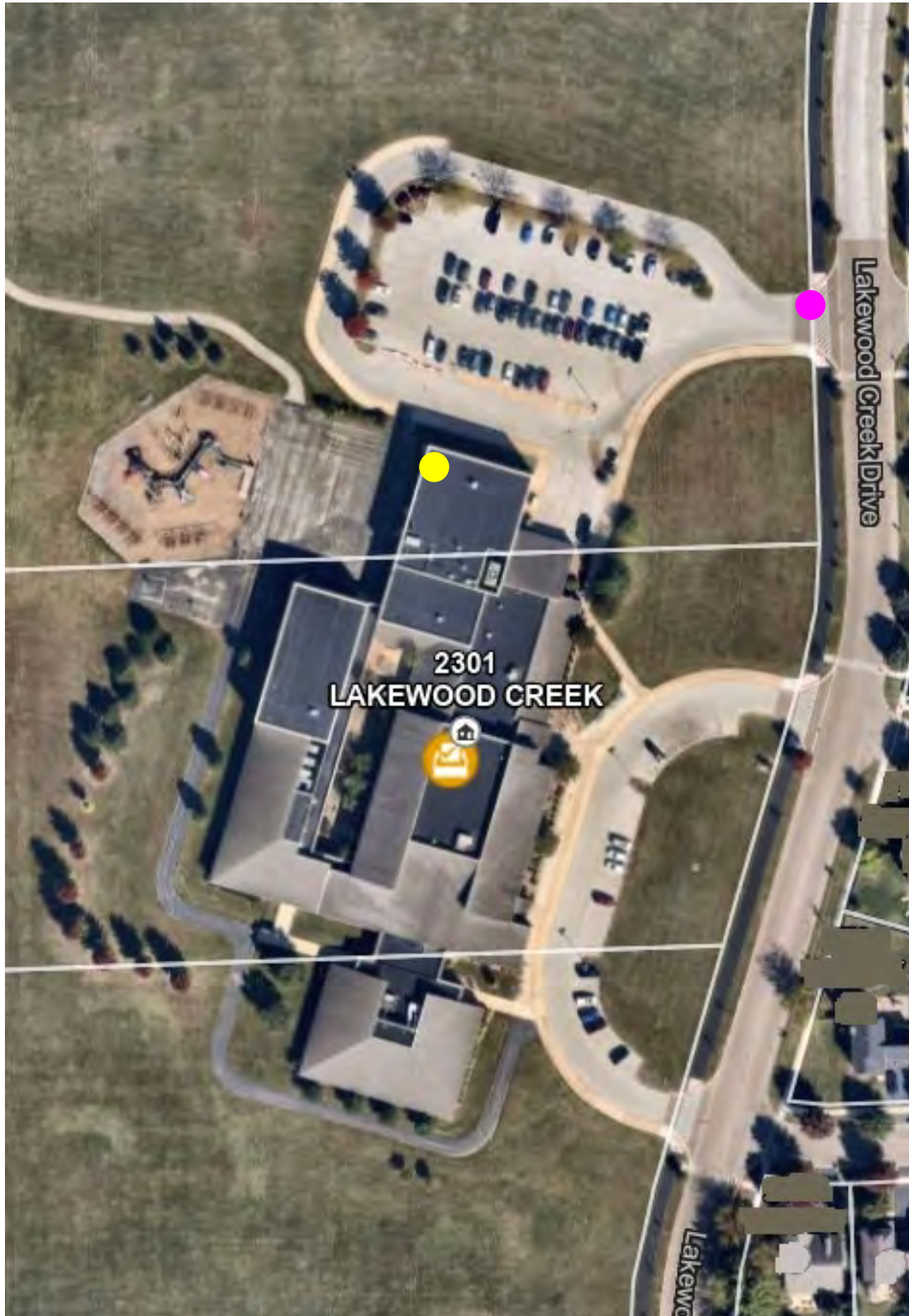
# Lakewood Creek Elementary School #308, Door #7 – Blue Gym

2301 Lakewood Creek Drive, Montgomery

**Pink ● = parking entrance**

**Yellow ● = polling place door entrance**

**BRISTOL PRECINCTS 11, 12 & 14**





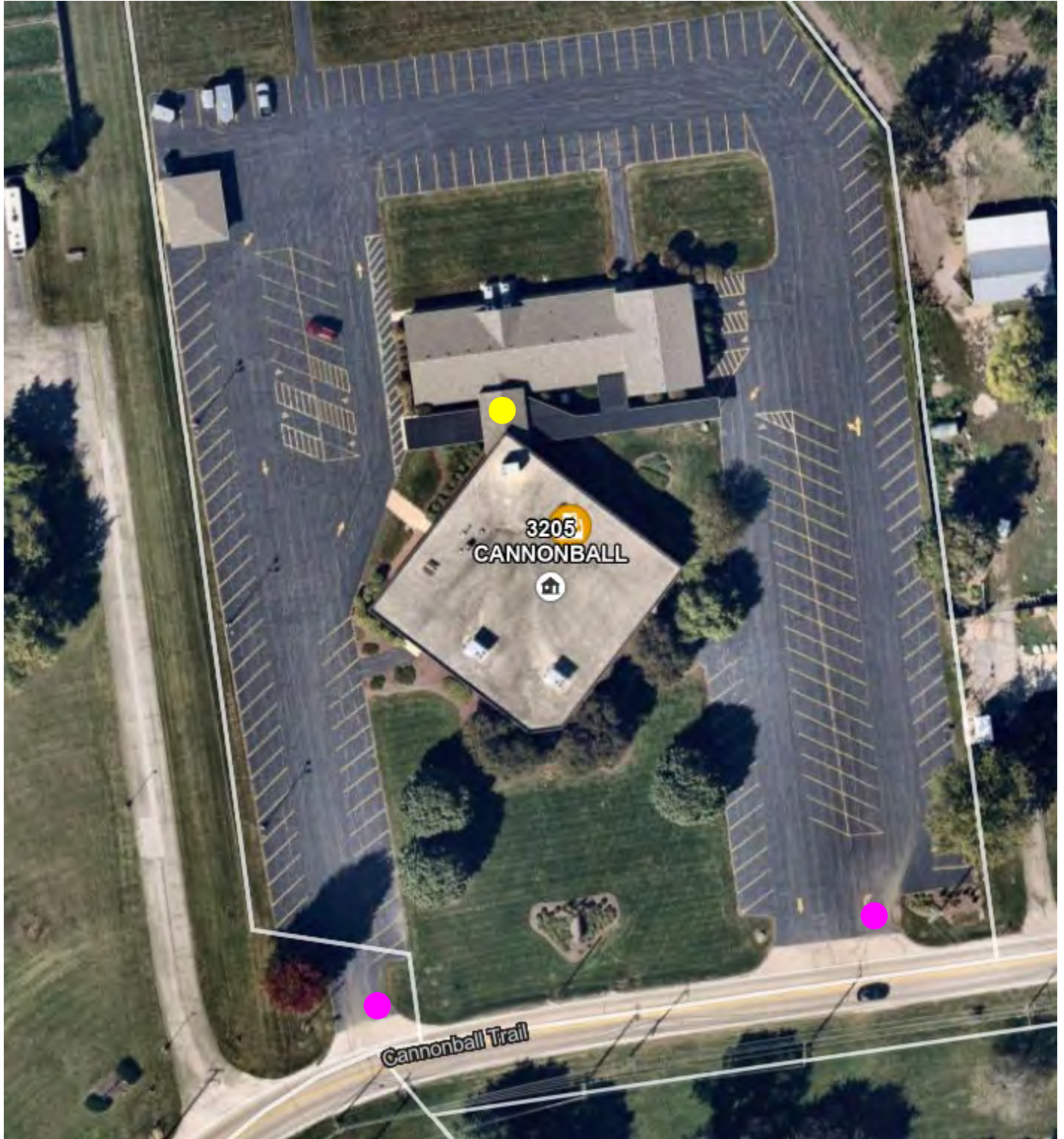
# New Life Church

3205 Cannonball Trail, Yorkville

**Pink ● = parking entrance**

**Yellow ● = polling place door entrance**

**BRISTOL PRECINCTS 17 & 18**





# Fox Township Building

8495 Fox River Drive, Millbrook

Pink ● = parking entrance

Yellow ● = polling place door entrance

**FOX PRECINCTS 1 & 2**





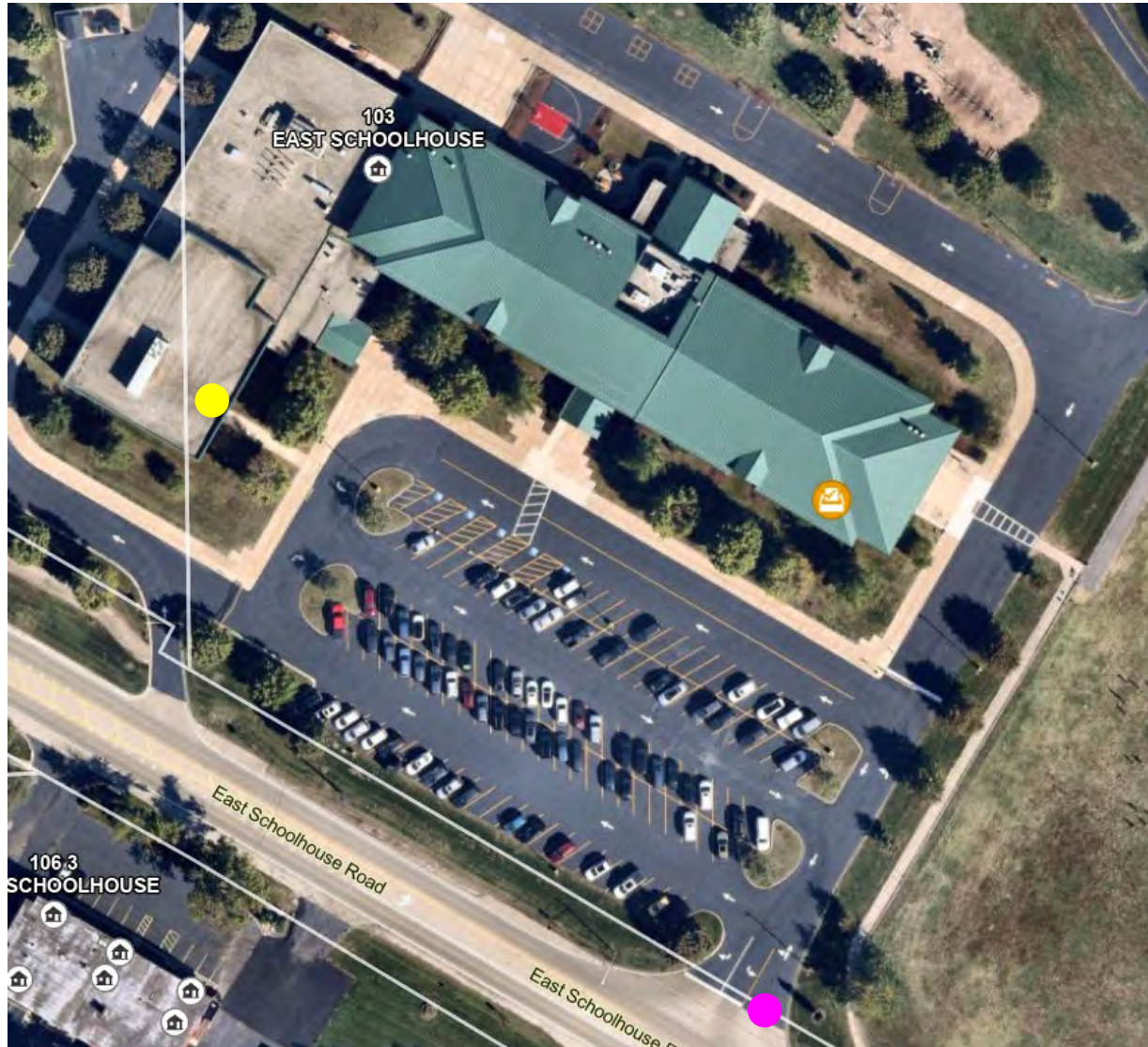
# Yorkville Intermediate School #115, Door #3

103 E. Schoolhouse Road, Yorkville

**Pink ● = parking entrance**

**Yellow ● = polling place door entrance**

## KENDALL PRECINCTS 1 & 2





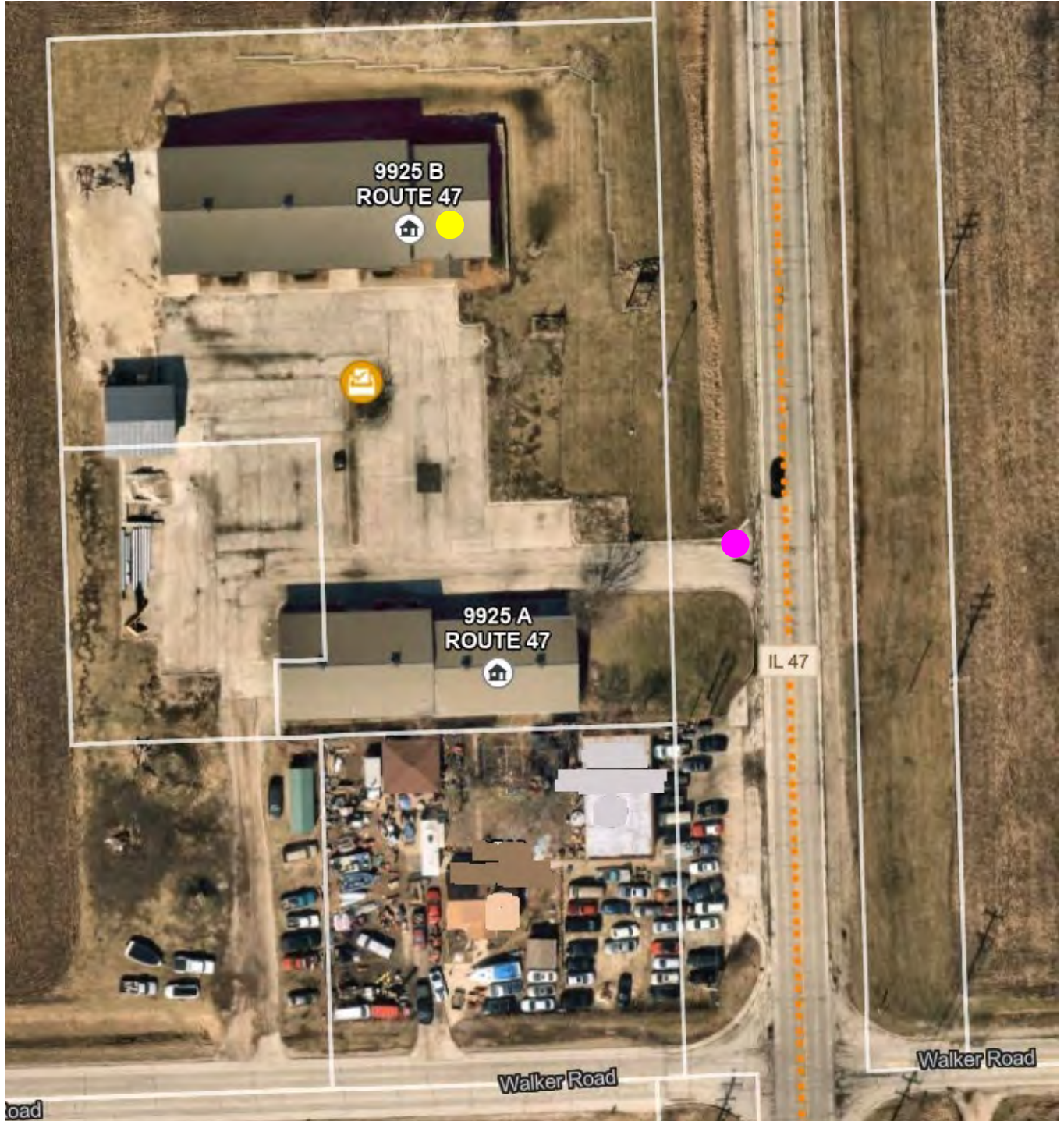
# Kendall Township Building

9925B Route 47, Yorkville

**Pink ● = parking entrance**

**Yellow ● = polling place door entrance**

## KENDALL PRECINCT 3





# Kendall County Extension Office

7775B Route 47, Yorkville

**Pink ● = parking entrance**

**Yellow ● = polling place door entrance**

## KENDALL PRECINCT 4





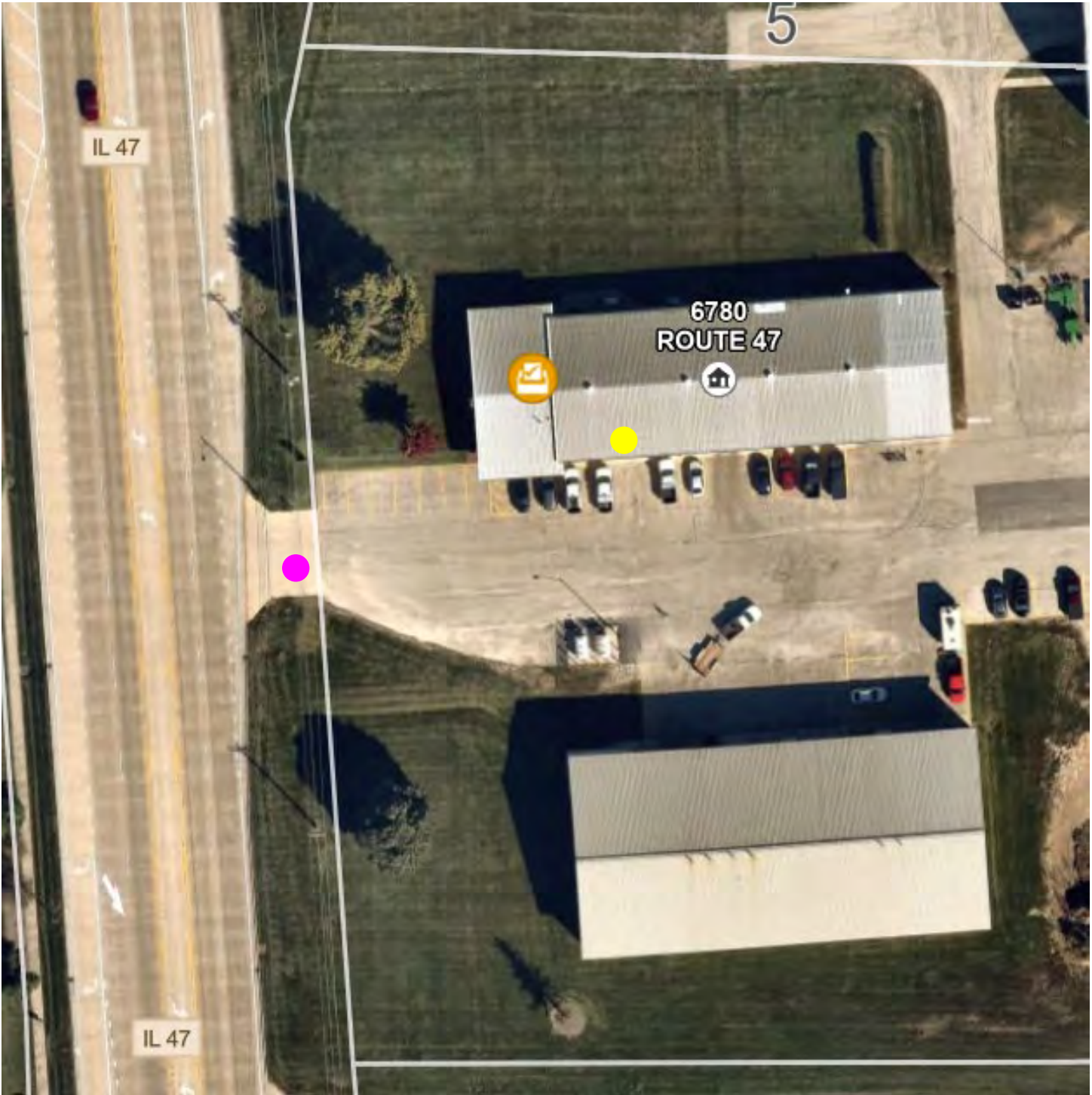
# Kendall County Highway Department

6780 Route 47, Yorkville

**Pink ● = parking entrance**

**Yellow ● = polling place door entrance**

## KENDALL PRECINCTS 5 & 6



# Elburn CO-OP Newark Agronomy

12219 State Route 47, Newark

**Pink ● = parking entrance**

**Yellow ● = polling place door entrance**

## LISBON PRECINCT 1





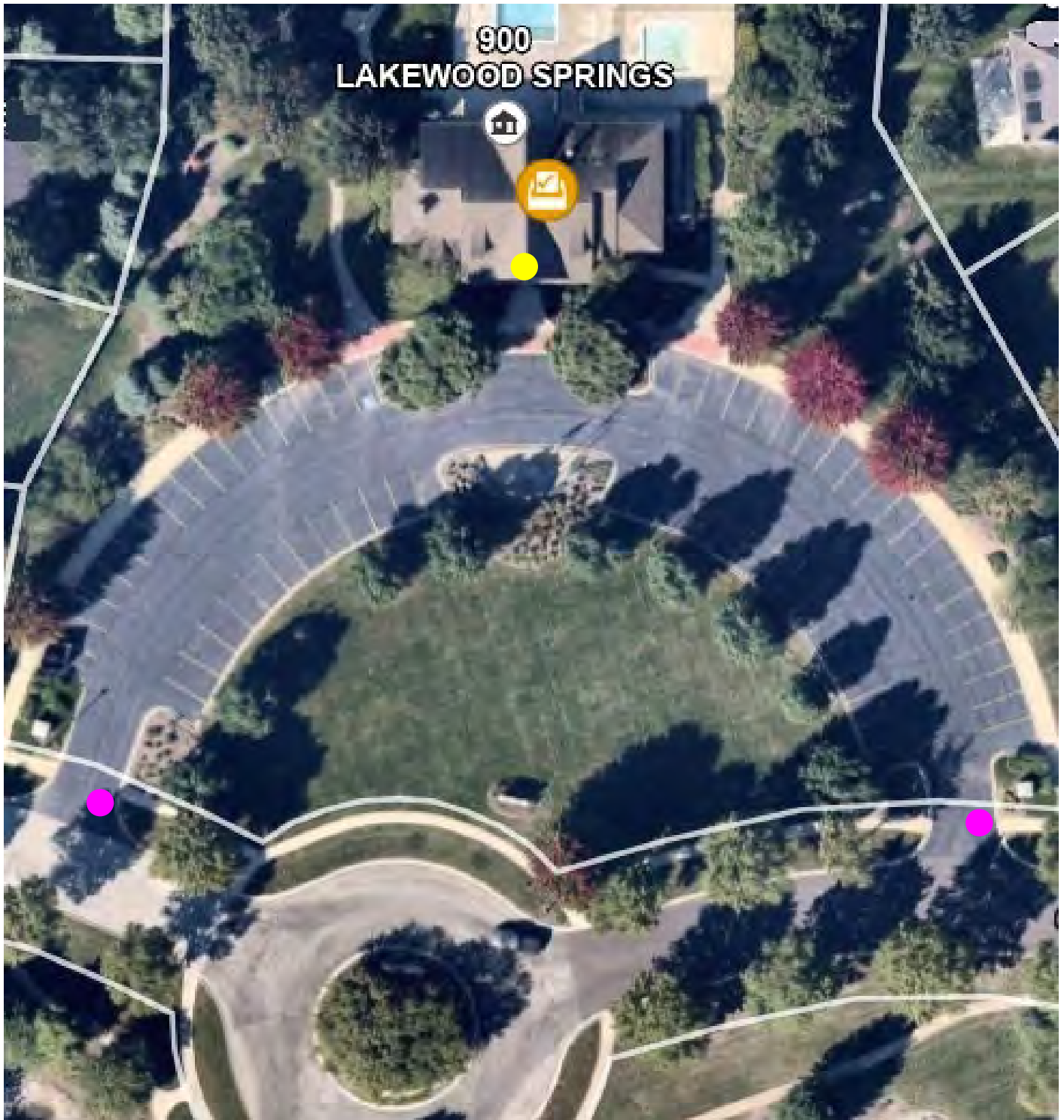
# Lakewood Springs Clubhouse North

900 Lakewood Springs Drive, Plano

**Pink ● = parking entrance**

**Yellow ● = polling place door entrance**

**LITTLE ROCK PRECINCTS 1 & 7**





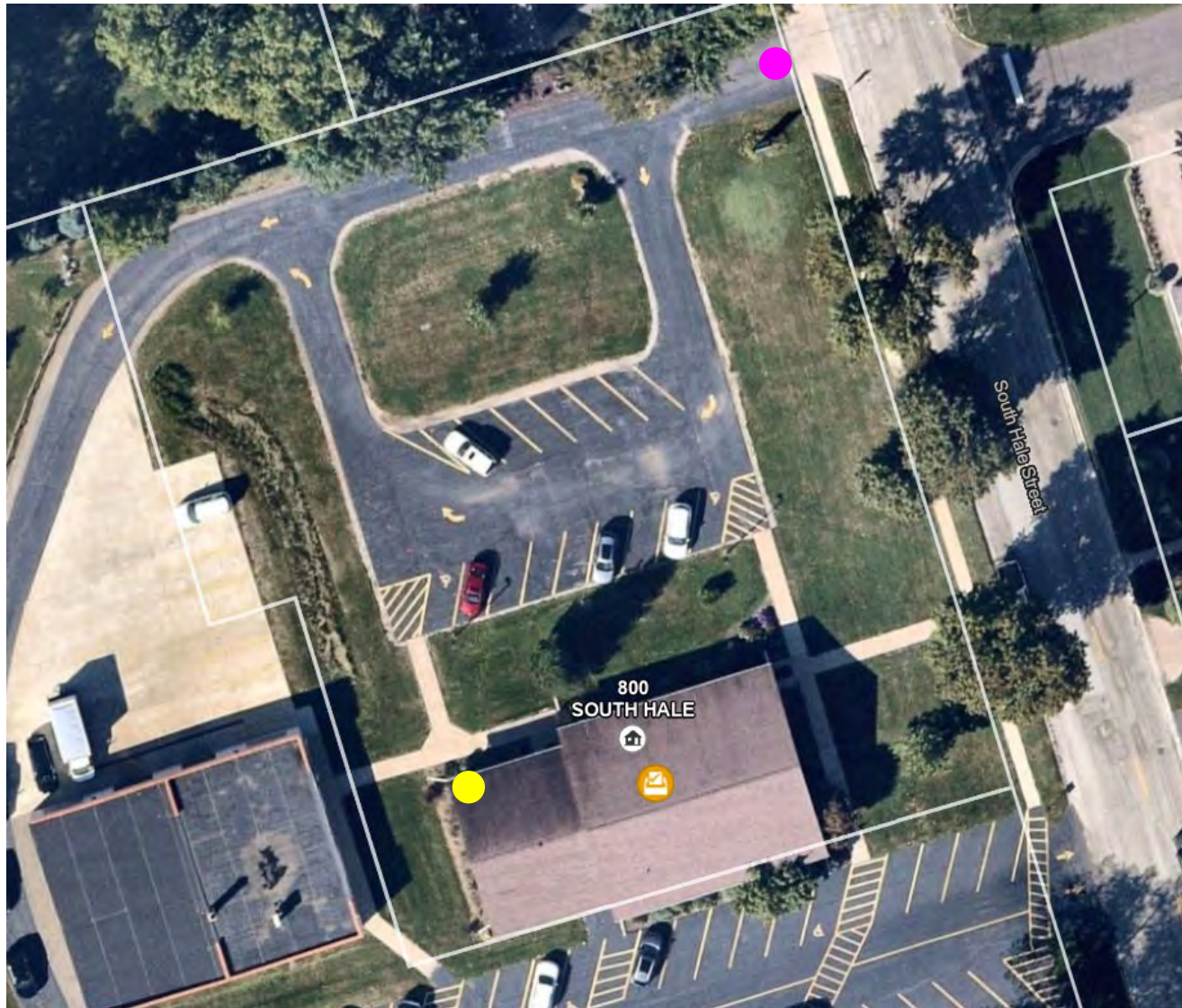
# Plano SD #88 Administrative Office, Door #3

800 S. Hale Street, Plano

Pink ● = parking entrance

Yellow ● = polling place door entrance

## LITTLE ROCK 2 & 3





# Plano High School #88, Door #6

704 W. Abe Street, Plano

Pink ● = parking entrance

Yellow ● = polling place door entrance

## LITTLE ROCK 4 & 5





# Lakewood Springs Clubhouse South

501 Mitchell Drive, Plano

**Pink ● = parking entrance**

**Yellow ● = polling place door entrance**

**LITTLE ROCK PRECINCTS 6 & 8**





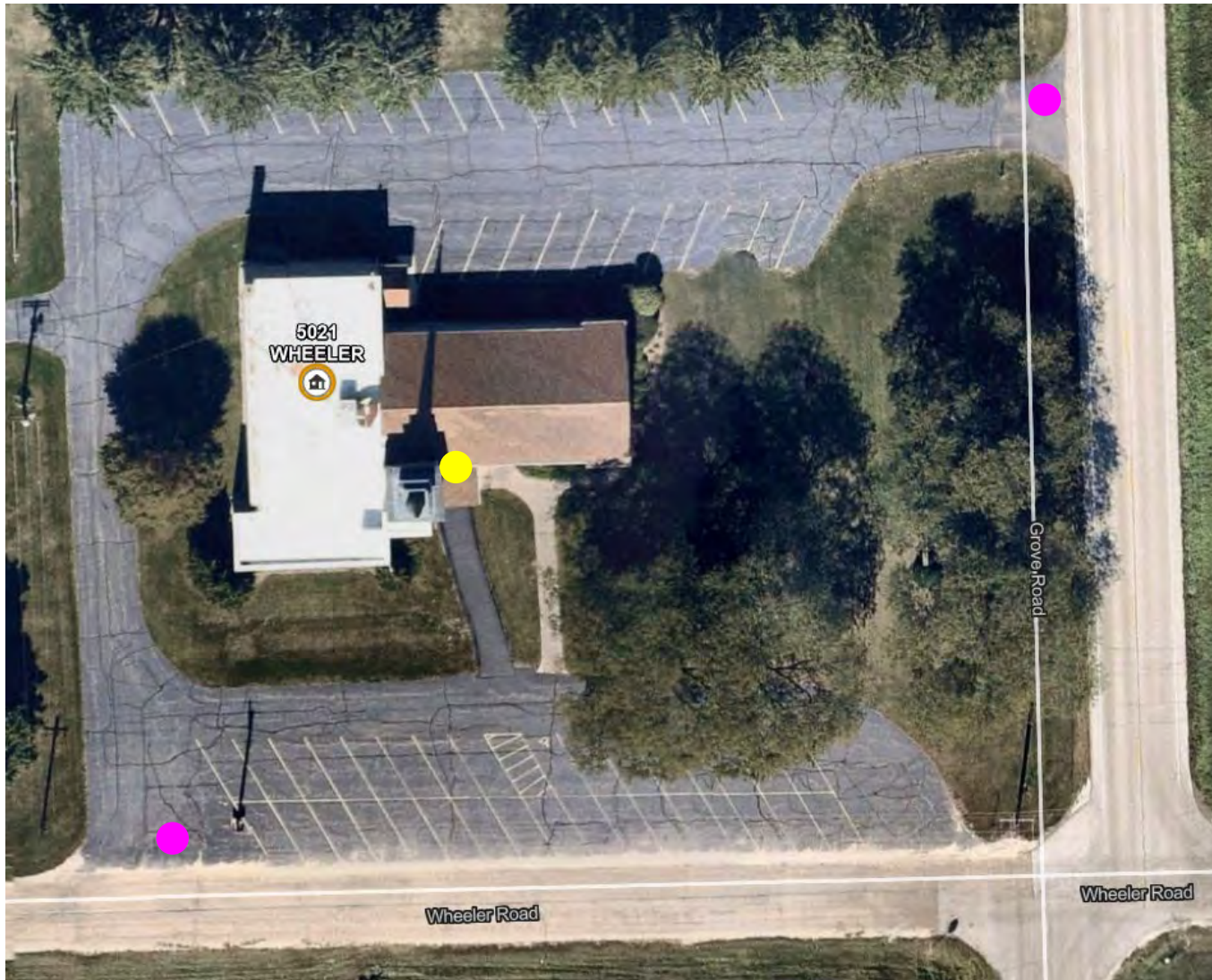
# Au Sable Grove Presbyterian Church, Main Door

5021-Wheeler Road, Yorkville

**Pink ● = parking entrance**

**Yellow ● = polling place door entrance**

**NA AU SAY PRECINCT 1**





**Plainfield South High School #202, Door #N (Northwest Side)**

7800 W. Caton Farm Road, Plainfield

**Pink ● = parking entrance**

**Yellow ● = polling place door entrance**

**NA AU SAY PRECINCTS 2 & 6**





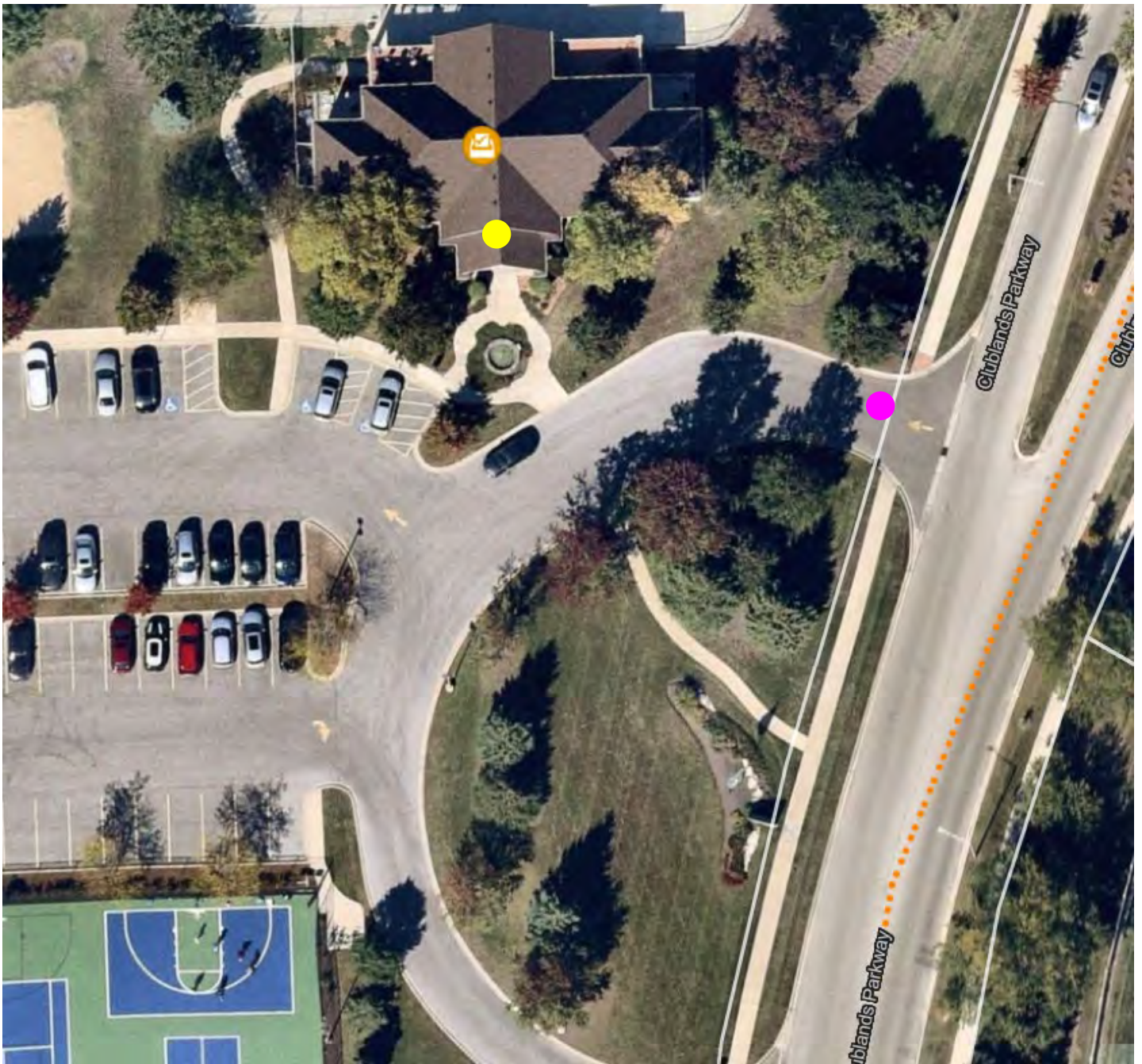
# Clublands Clubhouse

1901 Clublands Parkway, Plainfield

**Pink ● = parking entrance**

**Yellow ● = polling place door entrance**

**NA AU SAY PRECINCTS 3, 4 & 5**



# Fox Metro Water Reclamation District Building

682 State Route 31, Oswego

**Pink ● = parking entrance**

**Yellow ● = polling place door entrance**

## OSWEGO PRECINCT 1





# Hunt Club Elementary School #308, Door #9 – Community Room (Enter off Bickford Ave.)

4001 Hunt Club Drive, Oswego

Pink ● = parking entrance

Yellow ● = polling place door entrance

OSWEGO PRECINCTS 2 & 25





# Plank Junior High School #308, Door #3 – Community Room

510 Secretariat Lane, Oswego

**Pink ● = parking entrance**

**Yellow ● = polling place door entrance**

**OSWEGO PRECINCTS 3, 30 & 33**





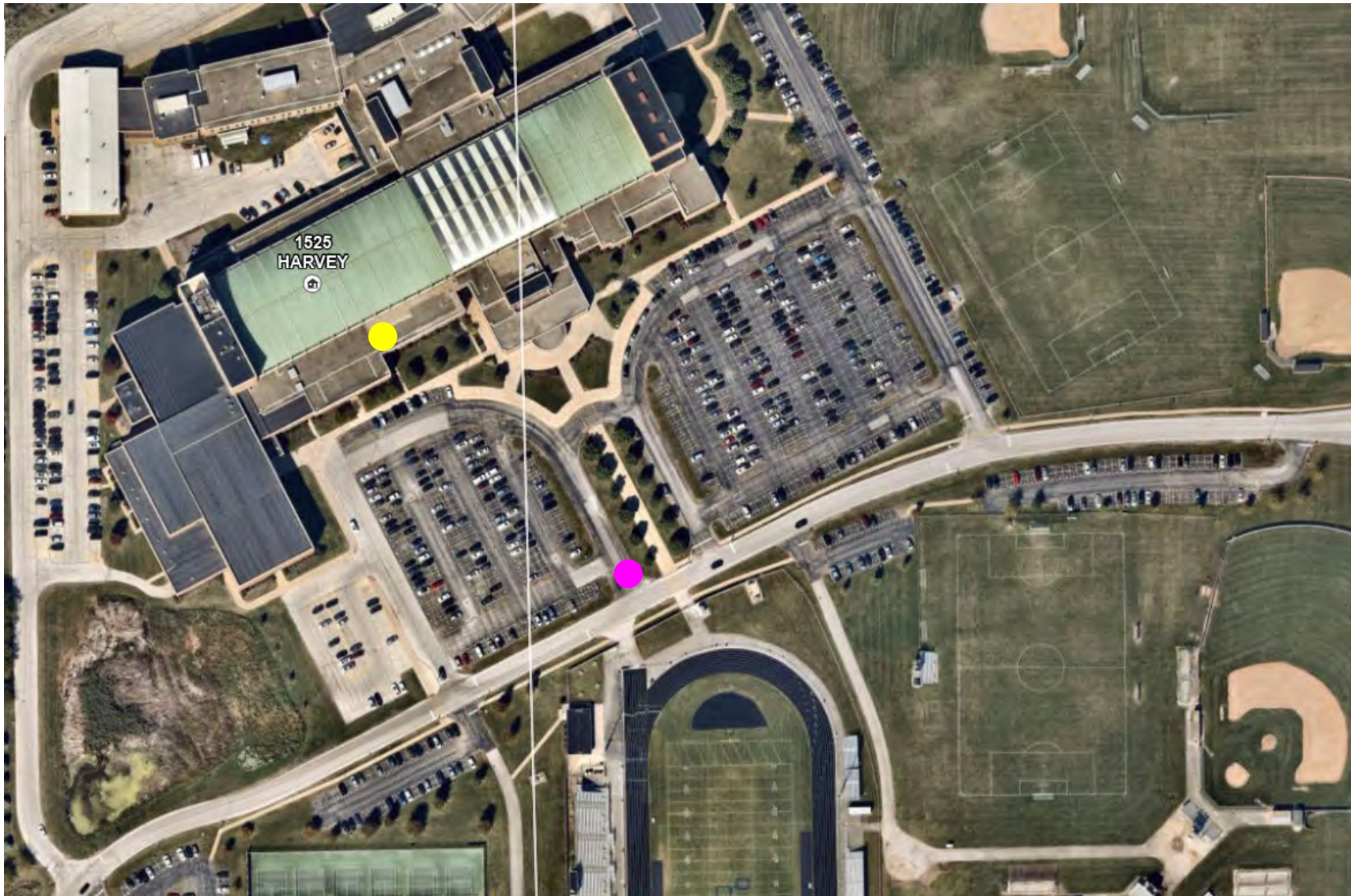
# Oswego East High School #308, Door #45 – Wrestling Room

1525 Harvey Road, Oswego

**Pink ● = parking entrance**

**Yellow ● = polling place door entrance**

**OSWEGO PRECINCTS 4, 18 & 19**





# Boulder Hill Elementary School #308, Door #5 – Main Gym

163 Boulder Hill Pass, Montgomery

**Pink ● = parking entrance**

**Yellow ● = polling place door entrance**

**OSWEGO PRECINCTS 5 & 6**





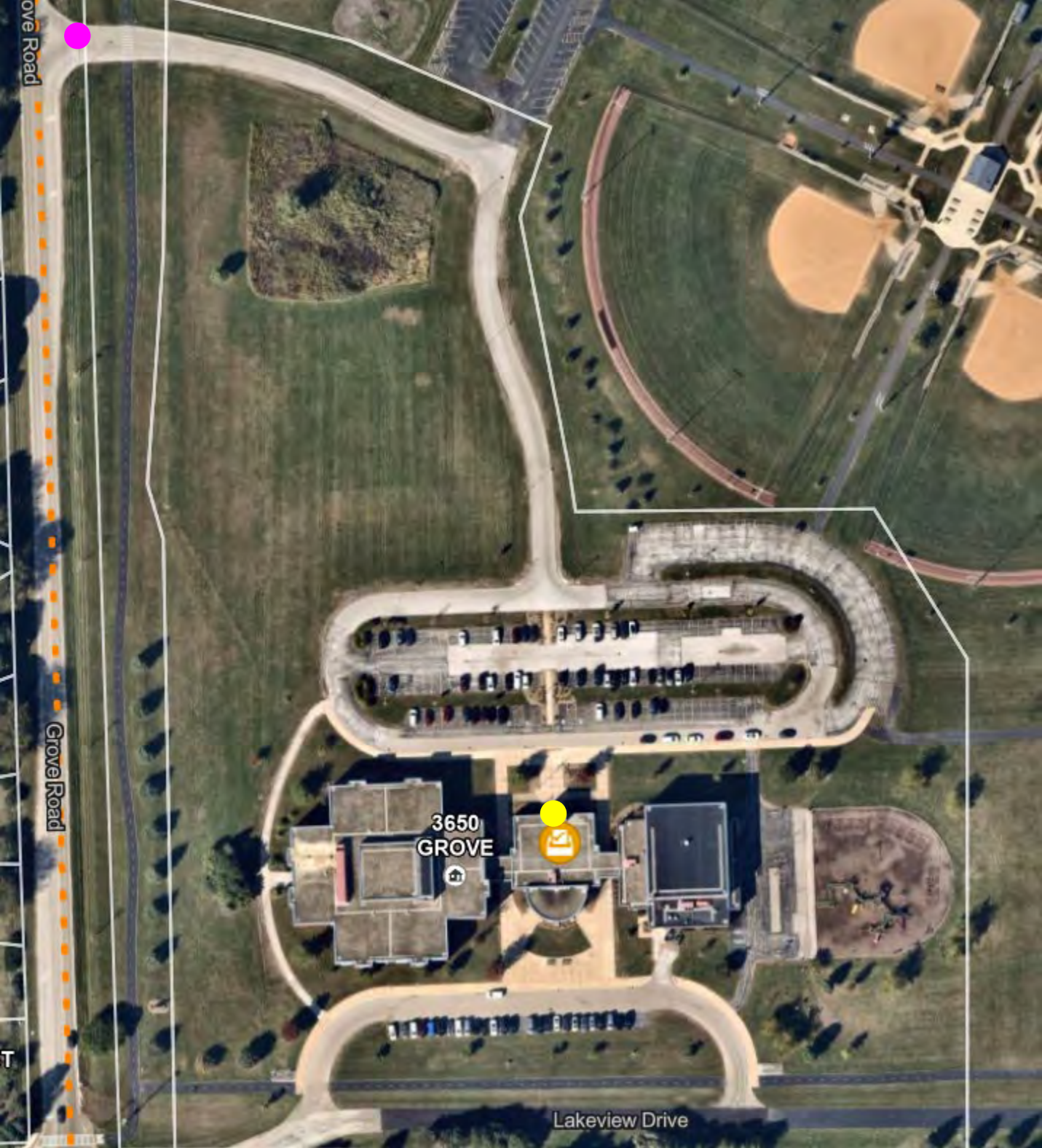
**Prairie Point Elementary School #308, Door #1 – Community Room**

3650 Grove Road, Oswego

**Pink ● = parking entrance**

**Yellow ● = polling place door entrance**

**OSWEGO PRECINCTS 7, 21 & 26**





# Long Beach Elementary School #308, Door #17 – Gym-Front Side

67 Long Beach Road, Montgomery

**Pink ● = parking entrance**

**Yellow ● = polling place door entrance**

**OSWEGO PRECINCTS 8 & 9**





# Oswego Village Hall, Main Door – Community Room

100 Parkers Mill, Oswego

**Pink ● = parking entrance**

**Yellow ● = polling place door entrance**

**OSWEGO PRECINCTS 10, 11 & 28**





# Old Post Elementary School #308, Door #9 – Gym-East Side

100 Old Post Road, Oswego

**Pink ● = parking entrance**

**Yellow ● = polling place door entrance**

**OSWEGO 12, 13 & 24**





# Murphy Junior High School #308, Door #1 – Community Room C103

26923 Grande Park Boulevard, Plainfield

**Pink ● = parking entrance**

**Yellow ● = polling place door entrance**

**OSWEGO 14 & 27**





# Oswego Library – Montgomery Campus, Side Door – Meeting Room

1111 Reading Drive, Montgomery

**Pink ● = parking entrance**

**Yellow ● = polling place door entrance**

**OSWEGO PRECINCTS 15, 23 & 29**





# Southbury Elementary School #308, Door #26 – Community Room

820 Preston Lane, Oswego

**Pink ● = parking entrance**

**Yellow ● = polling place door entrance**

**OSWEGO PRECINCTS 16 & 31**





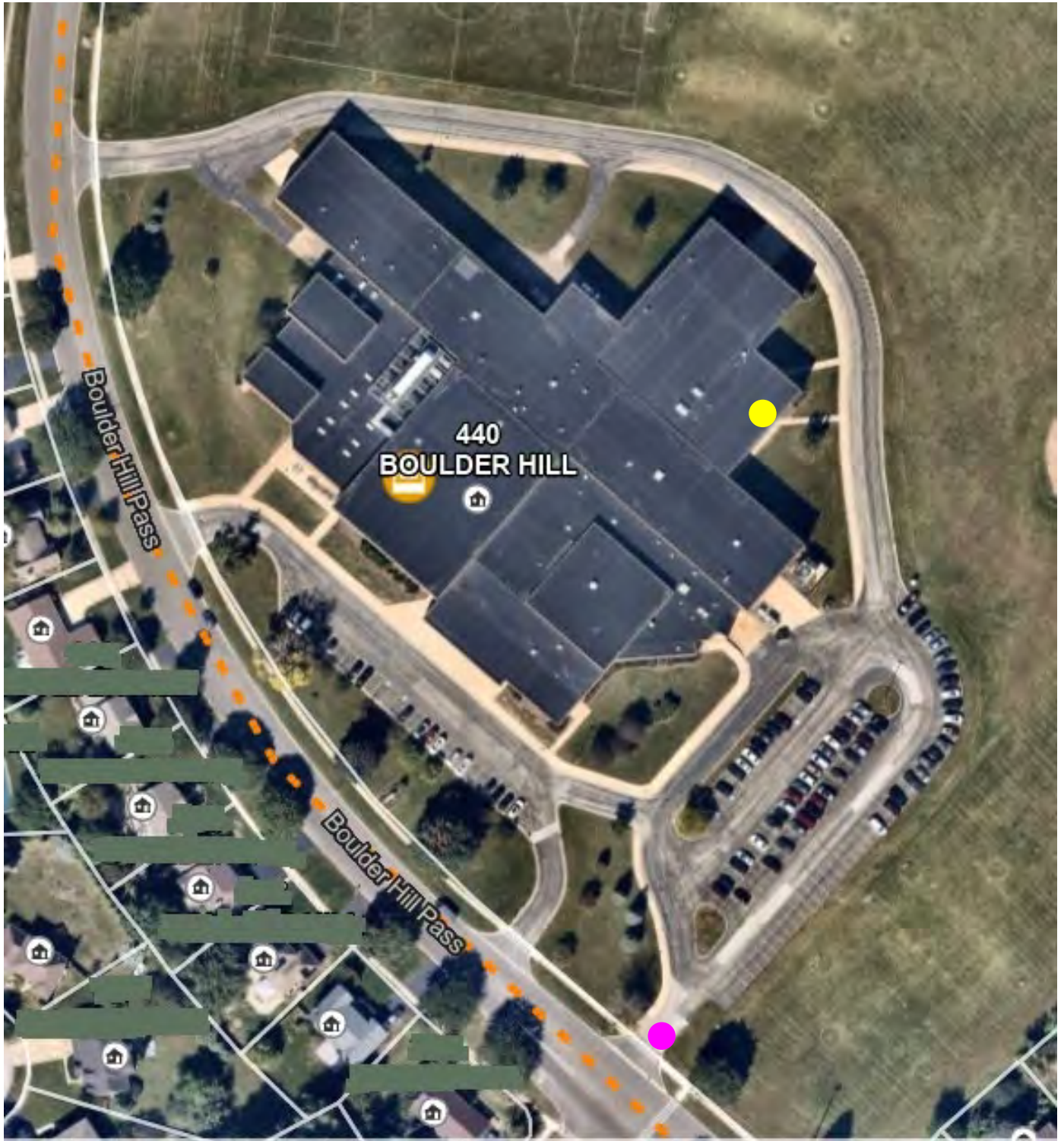
**Thompson Junior High School #308, Door #12 – Community Room  
(Back of School)**

440 Boulder Hill Pass, Oswego

**Pink ● = parking entrance**

**Yellow ● = polling place door entrance**

**OSWEGO PRECINCTS 17 & 20**





**Fox Chase Elementary School #308, Door #8 – Gym-West Side  
(Enter off Century Dr.)**

260 Fox Chase Drive North, Oswego

**Pink ● = parking entrance**

**Yellow ● = polling place door entrance**

**OSWEGO PRECINCTS 22 & 32**





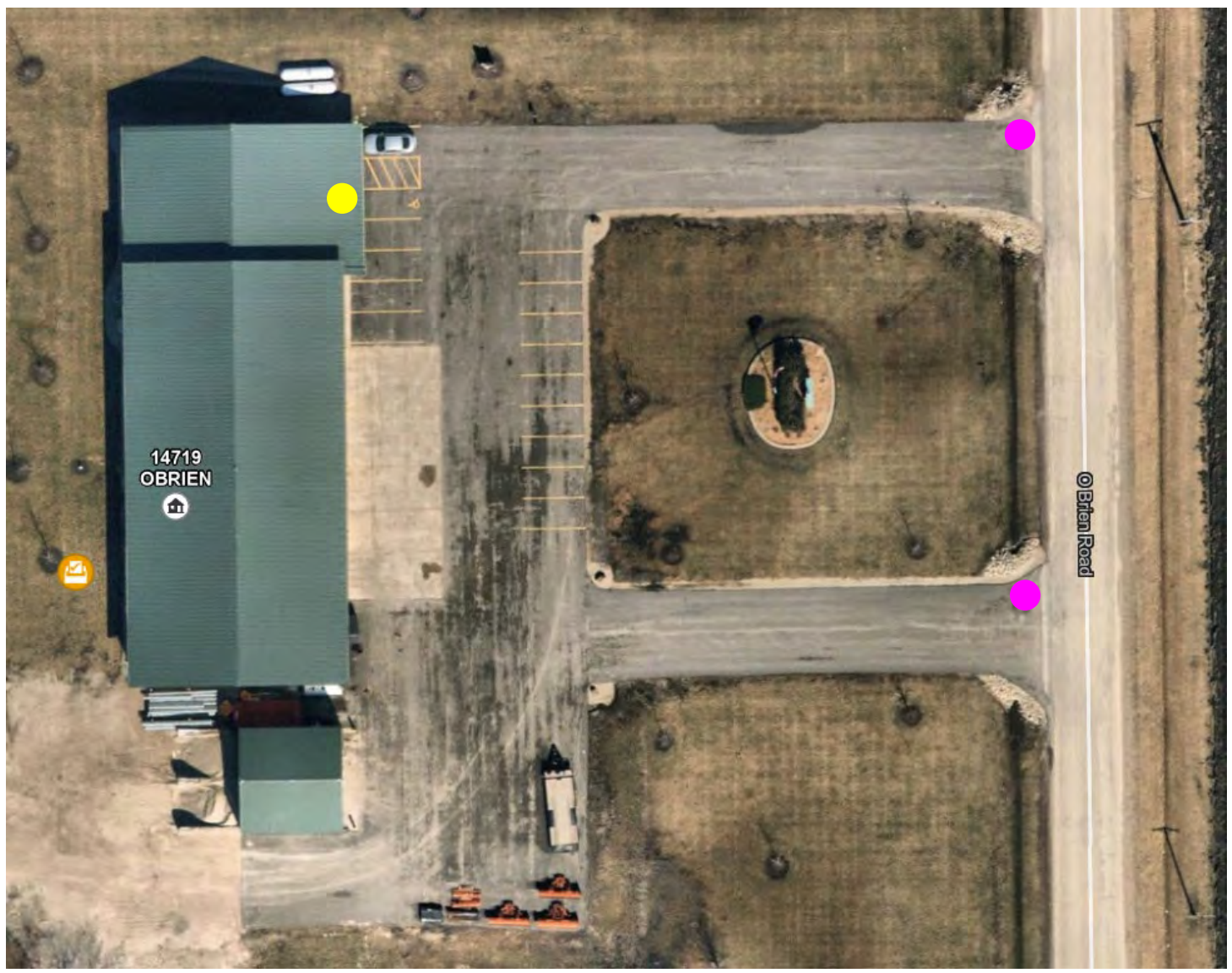
# Seward Township Building

14719 O'Brien Road, Minooka

Pink ● = parking entrance

Yellow ● = polling place door entrance

## SEWARD PRECINCT 1





# Lakewood Prairie Clubhouse

1200 Barberry Way, Joliet

**Pink ● = parking entrance**

**Yellow ● = polling place door entrance**

**SEWARD PRECINCTS 2 & 3**





# Kendall County Office Building

111 W. Fox Street, Room 104, Yorkville

**Pink ● = parking entrance**

**Yellow ● = polling place door entrance**

**VOTE CENTER**

