

State of Illinois  
County of Kendall

Zoning Petition  
SD Permit #03-26  
(Benson Office Building)

**ORDINANCE 2003 - 34**  
Detention Variance

**Lot 4 Silver Wheel Subdivision (Benson Office Building)**  
**1.44 Acres located on the North side of Route 34 approximately 680 feet east of**  
**Cherry Drive -Oswego Township**

WHEREAS, Kevin Benson as owner has submitted final engineering plans to allow for the development of a 5,000 sq. ft. office building on a 1.44 acre parcel of land commonly known as Lot 4 in the Silver Wheel Subdivision; and

WHEREAS, the property is legally described in Exhibit "A" attached hereto and made a part hereof; and

WHEREAS, Kevin Benson has petitioned the Planning, Building and Zoning Committee For approval of a variance to Section 4.03.0 Paragraph 1 of the Kendall County Stormwater Management Ordinance dated September 19, 2002; and

WHEREAS, the ordinance requires the release of stormwater from a two year storm event at a restricted rate of 0.04 cubic feet per second to facilitate improved water quality; and

WHEREAS, compliance with this standard would require the installation of a 1.375 inch diameter restrictor pipe which due to it's relatively small diameter could become an ongoing maintenance problem; and

WHEREAS, the Committee reviewed the request at its meeting on October 14, 2003; and

WHEREAS, the Committee, after reviewing the request recommended approval subject to final engineering review and approval; and

WHEREAS, the County's Consulting engineer Strand Associates, Inc. has reviewed and recommended approval of the final engineering for the project; and

WHEREAS, the Zoning Administrator has evaluated the request against the standards for granting a variance to the Kendall County Stormwater Management Ordinance, and has recommended approval of the variation request; and

WHEREAS, said variation would not have a negative effect on adjacent properties; and

WHEREAS, the size and topography of the property, scope of improvements and design of the basin will facilitate improved water quality and accommodate stormwater runoff without impacting adjacent properties.

NOW, THEREFORE, BE IT ORDAINED, the Kendall County Board hereby approves a variation to Section 403.0 Paragraph 1 of the Kendall County Stormwater Ordinance to allow construction of a detention basin that does not comply with the required two year storm event release rate of 0.04 cubic feet per second to serve the development of an office building on Lot 4 in the Silver Wheel Subdivision as depicted on "Exhibit B" attached hereto and made a part hereof.

IN WITNESS OF, this ordinance has been enacted on October 21, 2002.

  
\_\_\_\_\_

Attest:

  
\_\_\_\_\_

John A. Church

Kendall County Board Chairman

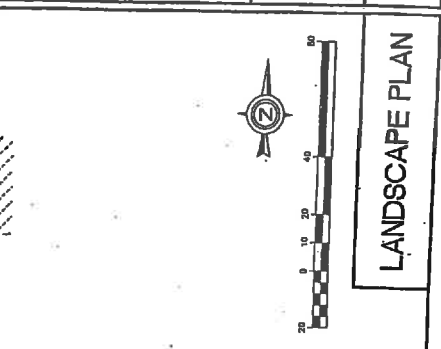
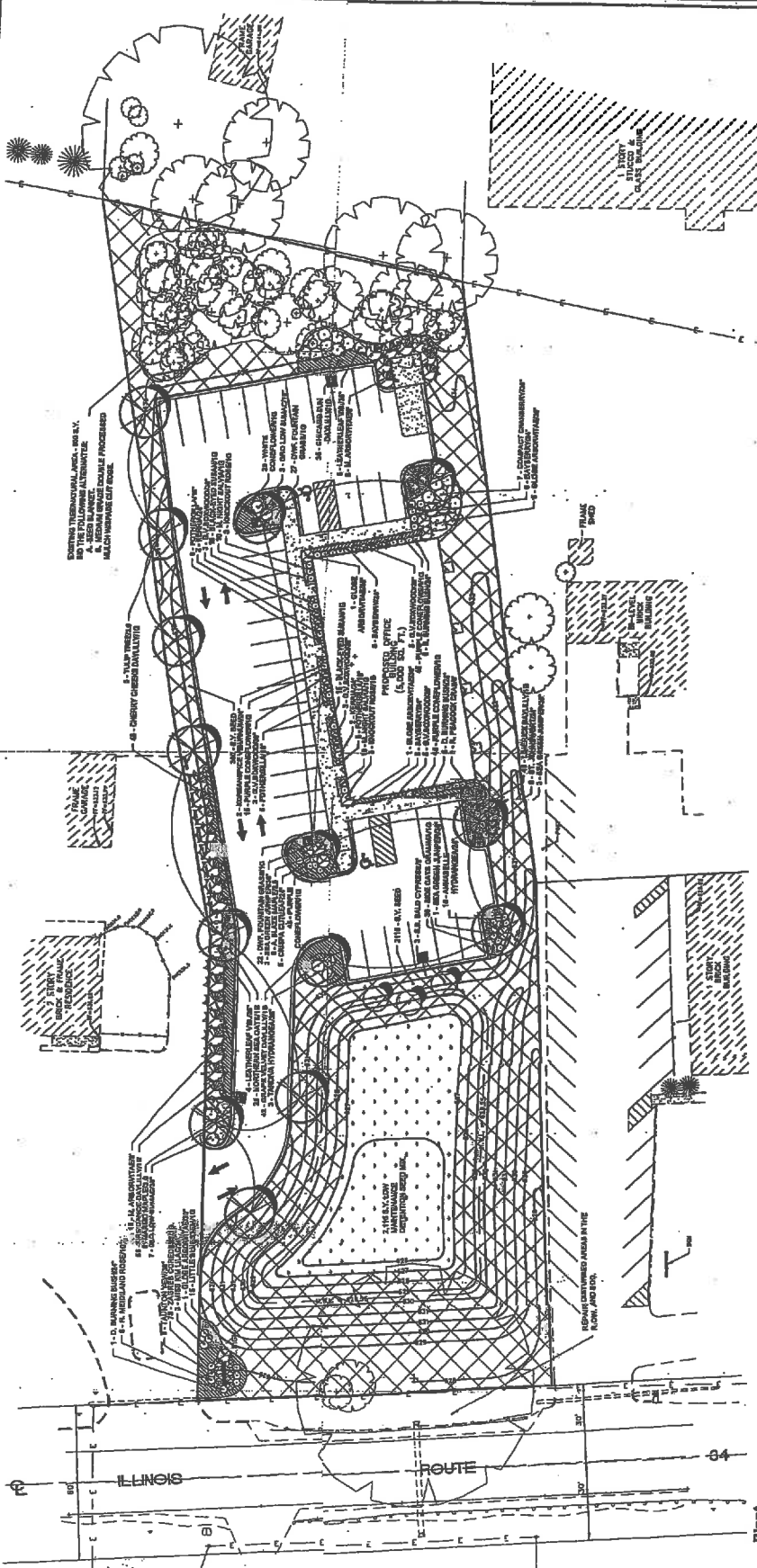
Paul Anderson  
Kendall County Clerk

**LEGAL DESCRIPTION**

**LOT 4 OF SILVER WHEEL SUBDIVISION OF PART OF THE SOUTHEAST QUARTER OF SECTION 18, TOWNSHIP 37 NORTH, RANGE 8 EAST OF THE THIRD PRINCIPAL MERIDIAN, IN THE TOWNSHIP OF OSWEGO, KENDALL COUNTY ILLINOIS.**

**PERMANENET TAX NUMBER 03-18-403-016**

**EXHIBIT "A"**



**LANDSCAPE PLAN**

1. 10' WAINWING BARKSPRINKLER  
 2. 10' WAINWING BARKSPRINKLER  
 3. 10' WAINWING BARKSPRINKLER  
 4. 10' WAINWING BARKSPRINKLER  
 5. 10' WAINWING BARKSPRINKLER  
 6. 10' WAINWING BARKSPRINKLER  
 7. 10' WAINWING BARKSPRINKLER  
 8. 10' WAINWING BARKSPRINKLER  
 9. 10' WAINWING BARKSPRINKLER  
 10. 10' WAINWING BARKSPRINKLER  
 11. 10' WAINWING BARKSPRINKLER  
 12. 10' WAINWING BARKSPRINKLER  
 13. 10' WAINWING BARKSPRINKLER  
 14. 10' WAINWING BARKSPRINKLER  
 15. 10' WAINWING BARKSPRINKLER  
 16. 10' WAINWING BARKSPRINKLER  
 17. 10' WAINWING BARKSPRINKLER  
 18. 10' WAINWING BARKSPRINKLER  
 19. 10' WAINWING BARKSPRINKLER  
 20. 10' WAINWING BARKSPRINKLER  
 21. 10' WAINWING BARKSPRINKLER  
 22. 10' WAINWING BARKSPRINKLER  
 23. 10' WAINWING BARKSPRINKLER  
 24. 10' WAINWING BARKSPRINKLER  
 25. 10' WAINWING BARKSPRINKLER  
 26. 10' WAINWING BARKSPRINKLER  
 27. 10' WAINWING BARKSPRINKLER  
 28. 10' WAINWING BARKSPRINKLER  
 29. 10' WAINWING BARKSPRINKLER  
 30. 10' WAINWING BARKSPRINKLER  
 31. 10' WAINWING BARKSPRINKLER  
 32. 10' WAINWING BARKSPRINKLER  
 33. 10' WAINWING BARKSPRINKLER  
 34. 10' WAINWING BARKSPRINKLER  
 35. 10' WAINWING BARKSPRINKLER  
 36. 10' WAINWING BARKSPRINKLER  
 37. 10' WAINWING BARKSPRINKLER  
 38. 10' WAINWING BARKSPRINKLER  
 39. 10' WAINWING BARKSPRINKLER  
 40. 10' WAINWING BARKSPRINKLER  
 41. 10' WAINWING BARKSPRINKLER  
 42. 10' WAINWING BARKSPRINKLER  
 43. 10' WAINWING BARKSPRINKLER  
 44. 10' WAINWING BARKSPRINKLER  
 45. 10' WAINWING BARKSPRINKLER  
 46. 10' WAINWING BARKSPRINKLER  
 47. 10' WAINWING BARKSPRINKLER  
 48. 10' WAINWING BARKSPRINKLER  
 49. 10' WAINWING BARKSPRINKLER  
 50. 10' WAINWING BARKSPRINKLER  
 51. 10' WAINWING BARKSPRINKLER  
 52. 10' WAINWING BARKSPRINKLER  
 53. 10' WAINWING BARKSPRINKLER  
 54. 10' WAINWING BARKSPRINKLER  
 55. 10' WAINWING BARKSPRINKLER  
 56. 10' WAINWING BARKSPRINKLER  
 57. 10' WAINWING BARKSPRINKLER  
 58. 10' WAINWING BARKSPRINKLER  
 59. 10' WAINWING BARKSPRINKLER  
 60. 10' WAINWING BARKSPRINKLER  
 61. 10' WAINWING BARKSPRINKLER  
 62. 10' WAINWING BARKSPRINKLER  
 63. 10' WAINWING BARKSPRINKLER  
 64. 10' WAINWING BARKSPRINKLER  
 65. 10' WAINWING BARKSPRINKLER  
 66. 10' WAINWING BARKSPRINKLER  
 67. 10' WAINWING BARKSPRINKLER  
 68. 10' WAINWING BARKSPRINKLER  
 69. 10' WAINWING BARKSPRINKLER  
 70. 10' WAINWING BARKSPRINKLER  
 71. 10' WAINWING BARKSPRINKLER  
 72. 10' WAINWING BARKSPRINKLER  
 73. 10' WAINWING BARKSPRINKLER  
 74. 10' WAINWING BARKSPRINKLER  
 75. 10' WAINWING BARKSPRINKLER  
 76. 10' WAINWING BARKSPRINKLER  
 77. 10' WAINWING BARKSPRINKLER  
 78. 10' WAINWING BARKSPRINKLER  
 79. 10' WAINWING BARKSPRINKLER  
 80. 10' WAINWING BARKSPRINKLER  
 81. 10' WAINWING BARKSPRINKLER  
 82. 10' WAINWING BARKSPRINKLER  
 83. 10' WAINWING BARKSPRINKLER  
 84. 10' WAINWING BARKSPRINKLER  
 85. 10' WAINWING BARKSPRINKLER  
 86. 10' WAINWING BARKSPRINKLER  
 87. 10' WAINWING BARKSPRINKLER  
 88. 10' WAINWING BARKSPRINKLER  
 89. 10' WAINWING BARKSPRINKLER  
 90. 10' WAINWING BARKSPRINKLER  
 91. 10' WAINWING BARKSPRINKLER  
 92. 10' WAINWING BARKSPRINKLER  
 93. 10' WAINWING BARKSPRINKLER  
 94. 10' WAINWING BARKSPRINKLER  
 95. 10' WAINWING BARKSPRINKLER  
 96. 10' WAINWING BARKSPRINKLER  
 97. 10' WAINWING BARKSPRINKLER  
 98. 10' WAINWING BARKSPRINKLER  
 99. 10' WAINWING BARKSPRINKLER  
 100. 10' WAINWING BARKSPRINKLER

List of plants and materials used in the landscape plan.

Plant List	Quantity	Notes
1. 10' WAINWING BARKSPRINKLER	100	
2. 10' WAINWING BARKSPRINKLER	100	
3. 10' WAINWING BARKSPRINKLER	100	
4. 10' WAINWING BARKSPRINKLER	100	
5. 10' WAINWING BARKSPRINKLER	100	
6. 10' WAINWING BARKSPRINKLER	100	
7. 10' WAINWING BARKSPRINKLER	100	
8. 10' WAINWING BARKSPRINKLER	100	
9. 10' WAINWING BARKSPRINKLER	100	
10. 10' WAINWING BARKSPRINKLER	100	
11. 10' WAINWING BARKSPRINKLER	100	
12. 10' WAINWING BARKSPRINKLER	100	
13. 10' WAINWING BARKSPRINKLER	100	
14. 10' WAINWING BARKSPRINKLER	100	
15. 10' WAINWING BARKSPRINKLER	100	
16. 10' WAINWING BARKSPRINKLER	100	
17. 10' WAINWING BARKSPRINKLER	100	
18. 10' WAINWING BARKSPRINKLER	100	
19. 10' WAINWING BARKSPRINKLER	100	
20. 10' WAINWING BARKSPRINKLER	100	
21. 10' WAINWING BARKSPRINKLER	100	
22. 10' WAINWING BARKSPRINKLER	100	
23. 10' WAINWING BARKSPRINKLER	100	
24. 10' WAINWING BARKSPRINKLER	100	
25. 10' WAINWING BARKSPRINKLER	100	
26. 10' WAINWING BARKSPRINKLER	100	
27. 10' WAINWING BARKSPRINKLER	100	
28. 10' WAINWING BARKSPRINKLER	100	
29. 10' WAINWING BARKSPRINKLER	100	
30. 10' WAINWING BARKSPRINKLER	100	
31. 10' WAINWING BARKSPRINKLER	100	
32. 10' WAINWING BARKSPRINKLER	100	
33. 10' WAINWING BARKSPRINKLER	100	
34. 10' WAINWING BARKSPRINKLER	100	
35. 10' WAINWING BARKSPRINKLER	100	
36. 10' WAINWING BARKSPRINKLER	100	
37. 10' WAINWING BARKSPRINKLER	100	
38. 10' WAINWING BARKSPRINKLER	100	
39. 10' WAINWING BARKSPRINKLER	100	
40. 10' WAINWING BARKSPRINKLER	100	
41. 10' WAINWING BARKSPRINKLER	100	
42. 10' WAINWING BARKSPRINKLER	100	
43. 10' WAINWING BARKSPRINKLER	100	
44. 10' WAINWING BARKSPRINKLER	100	
45. 10' WAINWING BARKSPRINKLER	100	
46. 10' WAINWING BARKSPRINKLER	100	
47. 10' WAINWING BARKSPRINKLER	100	
48. 10' WAINWING BARKSPRINKLER	100	
49. 10' WAINWING BARKSPRINKLER	100	
50. 10' WAINWING BARKSPRINKLER	100	
51. 10' WAINWING BARKSPRINKLER	100	
52. 10' WAINWING BARKSPRINKLER	100	
53. 10' WAINWING BARKSPRINKLER	100	
54. 10' WAINWING BARKSPRINKLER	100	
55. 10' WAINWING BARKSPRINKLER	100	
56. 10' WAINWING BARKSPRINKLER	100	
57. 10' WAINWING BARKSPRINKLER	100	
58. 10' WAINWING BARKSPRINKLER	100	
59. 10' WAINWING BARKSPRINKLER	100	
60. 10' WAINWING BARKSPRINKLER	100	
61. 10' WAINWING BARKSPRINKLER	100	
62. 10' WAINWING BARKSPRINKLER	100	
63. 10' WAINWING BARKSPRINKLER	100	
64. 10' WAINWING BARKSPRINKLER	100	
65. 10' WAINWING BARKSPRINKLER	100	
66. 10' WAINWING BARKSPRINKLER	100	
67. 10' WAINWING BARKSPRINKLER	100	
68. 10' WAINWING BARKSPRINKLER	100	
69. 10' WAINWING BARKSPRINKLER	100	
70. 10' WAINWING BARKSPRINKLER	100	
71. 10' WAINWING BARKSPRINKLER	100	
72. 10' WAINWING BARKSPRINKLER	100	
73. 10' WAINWING BARKSPRINKLER	100	
74. 10' WAINWING BARKSPRINKLER	100	
75. 10' WAINWING BARKSPRINKLER	100	
76. 10' WAINWING BARKSPRINKLER	100	
77. 10' WAINWING BARKSPRINKLER	100	
78. 10' WAINWING BARKSPRINKLER	100	
79. 10' WAINWING BARKSPRINKLER	100	
80. 10' WAINWING BARKSPRINKLER	100	
81. 10' WAINWING BARKSPRINKLER	100	
82. 10' WAINWING BARKSPRINKLER	100	
83. 10' WAINWING BARKSPRINKLER	100	
84. 10' WAINWING BARKSPRINKLER	100	
85. 10' WAINWING BARKSPRINKLER	100	
86. 10' WAINWING BARKSPRINKLER	100	
87. 10' WAINWING BARKSPRINKLER	100	
88. 10' WAINWING BARKSPRINKLER	100	
89. 10' WAINWING BARKSPRINKLER	100	
90. 10' WAINWING BARKSPRINKLER	100	
91. 10' WAINWING BARKSPRINKLER	100	
92. 10' WAINWING BARKSPRINKLER	100	
93. 10' WAINWING BARKSPRINKLER	100	
94. 10' WAINWING BARKSPRINKLER	100	
95. 10' WAINWING BARKSPRINKLER	100	
96. 10' WAINWING BARKSPRINKLER	100	
97. 10' WAINWING BARKSPRINKLER	100	
98. 10' WAINWING BARKSPRINKLER	100	
99. 10' WAINWING BARKSPRINKLER	100	
100. 10' WAINWING BARKSPRINKLER	100	